



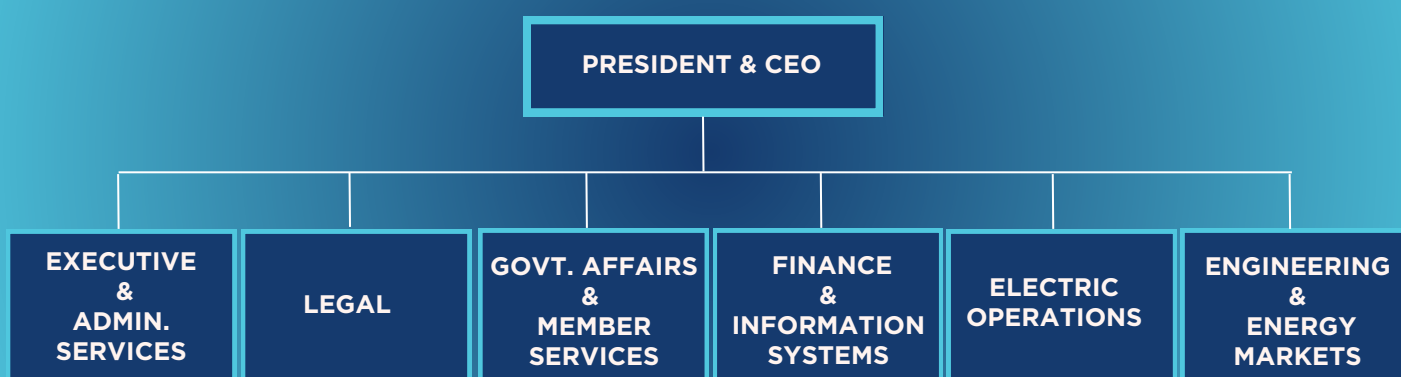
## WHAT IS THE ILLINOIS MUNICIPAL ELECTRIC AGENCY?

A body politic and corporate, municipal corporation and unit of local government of the State of Illinois organized under the Illinois Joint Municipal Electric Power Act, 65 ILCS 5/11-119.1-1 *et seq.* as a municipal power agency, providing electric power and energy and related services to its member municipalities that own and operate their municipal electric utility and electric distribution systems.

## WHAT IS THE ILLINOIS PUBLIC ENERGY AGENCY?

A body politic and corporate, municipal corporation and unit of local government of the State of Illinois organized under the Illinois Joint Municipal Natural Gas Act, 65 ILCS 5/11-119.2-1 *et seq.* (the “Act”) as a municipal natural gas agency, providing natural gas supply and related services to its member municipalities that own and operate their municipal natural gas distribution systems and other eligible utilities as defined in the Act. IPEA management, administration, and marketing are provided by IMEA under a contract for management services.

## FUNCTIONAL SUBDIVISIONS



## IMEA OPERATING BUDGET



FY 24/25  
\$347.2 mil.  
  
FY 25/26  
\$354.3 mil.

\*As approved on 2/20/2025 via IMEA budget ordinances

## IPEA OPERATING BUDGET



FY 24/25  
\$17.9 mil.  
  
FY 25/26  
\$18.8 mil.

\*As approved on 4/23/2025 via IPEA budget ordinances

## EMPLOYEES



Approximately 30 full-time employees

## 1 OFFICE - SPRINGFIELD, IL



3400 Conifer Drive  
Springfield, IL 62711

## IMEA BOARD OF DIRECTORS

IMEA identifies the membership of its Board of Directors [here](#).

## IPEA BOARD OF DIRECTORS

IPEA identifies the membership of its Board of Directors [here](#).

## LOOKING FOR PUBLIC RECORDS?

Recent Open Meeting Agendas and Minutes are available for IMEA [here](#) and for IPEA [here](#).

For all other public records requests,  
email [imea@imea.org](mailto:imea@imea.org) or call (217) 789-4632

**FOIA Officers**  
Troy Fodor  
Staci Wilson

(Certain records fees pursuant 5 ILCS 140/6 may apply)