



June 17, 2026

Re: **Executive Board Meeting: Wednesday, June 24 at 2:00 p.m.**
Board of Directors Meeting: Thursday, June 25 at 10:00 a.m.

Dear IMEA Board of Directors:

We look forward to having you with us this month for our upcoming meetings and have several action items on the agenda. Remote access to the meeting is available for listening purposes only using the Microsoft Teams webinar system and that information is on the bottom of the agendas.

Of interest this month, we will consider the approval of the IMEA Mission Statement and the Resource Analyst position along with a new delivery point for the City of Red Bud. Along with our regular reports, we will also consider the approval of the Conservation Voltage Reduction Study and the preferred member site along with authorizing a vendor Request for Proposal for the Integrated Resource Plan. Furthermore, staff will give an update on the preferred member site for the Battery Pilot project.

Please feel free to contact me should you have questions and stay safe!

Sincerely,

Doug Brown
President & CEO

Attachments

**ILLINOIS MUNICIPAL ELECTRIC AGENCY
EXECUTIVE BOARD MEETING
Wednesday, June 24, 2026 @ 2:00 p.m.**

Manner of Attendance: Participation in this meeting will be available in person only for both members and the general public. As an accommodation to Board members that cannot physically attend and the general public, a webinar broadcast of the meeting will be available live in listen-only mode.

AGENDA

Call to Order
Roll Call
Approval of Minutes – 4/22/2026
Opportunity for Public Comment

Old Business

1. Other old business

New Business

1. Approval of Appointment to Fill Executive Board and Officer Vacancy
2. Consideration & Approval of IMEA Mission Statement
3. Consideration & Approval of Resource Analyst Position
4. Resolution #26-06-977 – Approving New Delivery Point for the City of Red Bud
5. Consideration & Approval of Preferred Host Member and Conservation Voltage Reduction Study
6. Update on Preferred Member Site for Battery Pilot Project
7. Consideration & Approval Authorizing a Vendor Request for Proposal for the Integrated Resource Plan
8. Other new business
9. Adjourn

Calling for a motion to go into Executive Session for one of the following reasons:

- Discussion of IMEA litigation
- Discussion of the purchase, sale or delivery of electricity
- Discussion of personnel matters

WEBINAR PARTICIPATION for Listen-Only Purposes - Please use the link below to register:

<https://events.gcc.teams.microsoft.com/event/6b3eca2b-b60f-4888-8508-c04df7876210@244964f4-143f-41af-a3ee-b94b50296820>

After registering, you will receive a link via email to join the meeting. Should you have any questions regarding this process, please reach out to Glenn Cunningham or Adam Baker at (217) 789-4632.

**ILLINOIS MUNICIPAL ELECTRIC AGENCY
BOARD OF DIRECTORS MEETING
Thursday, June 25, 2026 @ 10:00 a.m.**

Manner of Attendance: Participation in this meeting will be available in person only for both members and the general public. There will be an opportunity for public comment in person at the meeting. As an accommodation to Board members that cannot physically attend and the general public, a webinar broadcast of the meeting will be available live in listen-only mode.

AGENDA

Call to Order
Pledge of Allegiance
Roll Call
Approval of Minutes – 4/23/26
Opportunity for Public Comment
Treasurer’s Report
President & CEO Report
 a. Legislative update

Old Business

1. Update on Operations
2. Update on Trimble County
3. Update on Prairie State
4. Update on Local Generation/Transmission
 - a. ARR/FTRs
5. Update on Solar Projects
6. Update on Legal Matters
7. Other old business

New Business

1. Approval of Appointment to Fill Executive Board and Officer Vacancy
2. Consideration & Approval of IMEA Mission Statement
3. Consideration & Approval of Resource Analyst Position
4. Resolution #26-06-977 – Approving New Delivery Point for the City of Red Bud
5. Consideration & Approval of Preferred Host Member and Conservation Voltage Reduction Study
6. Update on Preferred Member Site for Battery Pilot Project
7. Consideration & Approval Authorizing a Vendor Request for Proposal for the Integrated Resource Plan
8. Other new business
9. Adjourn

Calling for a motion to go into Executive Session for one of the following reasons:

- Discussion of IMEA litigation
- Discussion of the purchase, sale or delivery of electricity
- Discussion of personnel matters

WEBINAR PARTICIPATION - Please use the link below to register:

<https://events.gcc.teams.microsoft.com/event/8981a861-bb82-43aa-a30a-6ddaaa43d77a@244964f4-143f-41af-a3ee-b94b50296820>

After registering, you will receive a link via email to join the meeting. Should you have any questions regarding this process, please reach out to Glenn Cunningham or Adam Baker at (217) 789-4632.

ILLINOIS MUNICIPAL ELECTRIC AGENCY

REPORT OF EXECUTIVE BOARD MEETING

WEDNESDAY, APRIL 22, 2026

A regularly scheduled meeting of the Executive Board of the Illinois Municipal Electric Agency was held in person pursuant to proper notice at the IMEA headquarters building, 3400 Conifer Drive, Springfield, Illinois on April 22, 2026. Vice Chairman Brian Groth called the meeting to order at 2:00 pm. Roll call was taken which showed a quorum was present. Participation in this meeting was available in person only for both members and the general public, however, as an accommodation to members that could not physically attend and the general public, a webinar broadcast of the meeting was made available live in listen-only mode.

The Report of February 18, 2026 was moved for approval by Pete Suhr and seconded by Mike Kirk. The motion carried by unanimous roll call vote.

Opportunity for Public Comment: Vice Chairman Brian Groth stated that pursuant to the Open Meetings Act, any person attending this meeting shall be permitted an opportunity to comment. Questions during the rest of the meeting are reserved for Board members. He then asked if anyone from the public would like to make a comment. Hearing none, Vice Chairman Groth proceeded with the meeting.

NEW BUSINESS

Mission Statement Discussion – CEO Doug Brown discussed a proposed Mission Statement to be used as a marketing tool promoting the collective mission of the IMEA, IMUA and IPEA to advance the value of local control by providing reliable, affordable, and sustainable utility services and advocacy that empowers our member communities through collaboration and integrity-driven excellence. He asked the Board for recommendations and stated that IMEA Staff would be requesting approval of this proposed Mission Statement at the June Board meeting.

Resolution #26-04-975 – Approval of Distributed Energy Resource Management Program – Hubert Murray provided a timeline for implementing a Distributed Energy Resource Management program beginning in the second quarter of this year through 2027. This includes vendor onboarding and platform setup; member rollout and customer enrollment; smart thermostat control demand-side management and possibly incorporating other distributed energy resources and virtual power plant integration at a later time. He reported that the timeline is contingent upon contract negotiations, member authorization and associated deployment logistics. Murray reviewed the vendor bids along with the evaluation criteria. He stated that the Resolution establishes the program allowing members' residential customers to enroll their smart devices and potentially other distributed energy resources in the future. The program supports peak reduction and grid reliability and aligns with PJM and MISO requirements. The Resolution authorizes the President & CEO to execute agreements and implement this program. Bob Coble moved to recommend approval of this Resolution to the full Board at tomorrow's Board meeting, seconded by Pete Suhr. The roll call vote showed unanimous approval.

Committee Appointments and OMA/FOIA Officer Appointments – CEO Brown presented the committee appointments for the next fiscal year based upon the recommendations from Chairman Cook for the Board’s review and approval. CEO Brown also recommended that Troy Fodor and Staci Wilson continue as the Freedom of Information Act (FOIA) and Open Meetings Act (OMA) officers for the next fiscal year. Pat McCarthy moved to recommend the approval of the committee appointments for upcoming FY 2026-27 to the full Board at tomorrow’s Board meeting and that Troy Fodor and Staci Wilson remain as the OMA/FOIA officers for the next fiscal year. The motion was seconded by Pete Suhr and the roll call vote showed unanimous approval.

Resolution #26-04-976 – Establishing the Schedule of Meetings for the 2026-2027 Fiscal Year - CEO Brown reviewed the IMEA Executive Board/Board of Director’s meeting schedule for the upcoming fiscal year. Bob Coble moved to approve the Resolution, seconded by Mike Kirk. The roll call vote showed unanimous approval.

Update on Integrated Resource Plan (IRP) – Rakesh Kothakapu reported that the Clean and Reliability Grid Affordability Act (CRGA) requires municipalities and joint action agencies to conduct an IRP every 5 years. Members may adopt IMEA’s IRP, but members will still be required to provide notice via their website and billing. He stated that IMEA Staff will help coordinate this effort with the municipalities. He reviewed the requirements of an IRP to include technically feasible, cost-effective portfolio scenarios, consistent with RTO reliability obligations, potential options for constructing or procuring renewable energy resources to meet 40% of energy needs by 2030 and for meeting CEJA emission reduction requirements or supplying 100% of total projected load through carbon-free resources in combination with storage resources and demand programs by 2045. Kothakapu provided a tentative timeline for the IRP and noted that January 1, 2027 is the deadline to initiate the IRP.

With there being no other new business, Vice Chairman Brian Groth asked for a motion to adjourn the meeting. The motion was made by Pat McCarthy, seconded by Mike Kirk and carried unanimously by voice vote. The meeting was adjourned at 2:22 p.m.

Respectfully submitted,

Secretary/Treasurer

**ILLINOIS MUNICIPAL ELECTRIC AGENCY
EXECUTIVE BOARD MEETING
WEDNESDAY, APRIL 22, 2026**

MEMBERS PRESENT

Chatham	Pat McCarthy
Flora	Bob Coble
Naperville	Brian Groth
St. Charles	Peter Suhr
Sullivan	Mike Kirk

MEMBERS ABSENT

Altamont	Larry Taylor
Carmi	David Coston
Highland	Dan Cook
Marshall	Cory Sheehy

OTHERS PRESENT

Breese	Jason Deering
Peru	Kevin Minnick
Waterloo	J.R. Landeck
Winnetka	Nick Narhi
IMEA	Doug Brown
IMEA	Troy Fodor
IMEA	Chris Wise
IMEA	Mandy Ripperda
IMEA	Staci Wilson
IMEA	Rakesh Kothakapu
IMEA	Eric Weinant
IMEA	Glenn Cunningham
IMEA	Adam Baker
IMEA	Shadi Ahanchi
IMEA	Tia Horn
IMEA	Danny Chung
IMEA	Jonathon Wygant
IMEA	Hubert Murray
IMEA	Rodd Whelpley
IMEA	Tammy Hall
Guest	Raheel Arshed (Naperville)
Guest	Giovanni McLean (St. Charles)
Guest	Sam Carrasco (Winnetka)
Guest	James Olson (Winnetka)

LISTEN ONLY VIA WEBINAR

Carmi	David Coston
Freeburg	Matt Trout
Marshall	Cory Sheehy
Princeton	Jeff Mangrich
Red Bud	Josh Eckart
IMEA	Ellen Woerhmann
Guest	Greg Hubert

ILLINOIS MUNICIPAL ELECTRIC AGENCY

REPORT OF BOARD OF DIRECTORS MEETING

THURSDAY, APRIL 23, 2026

A regularly scheduled meeting of the Board of Directors of the Illinois Municipal Electric Agency was held in person pursuant to proper notice at the IMEA headquarters building, 3400 Conifer Drive, Springfield, Illinois on April 23, 2026. Vice Chairman Brian Groth called the meeting to order at 10:00 a.m. and all attendees participated in the Pledge of Allegiance. Roll call was taken which showed a quorum was present. Participation in this meeting was available in person only for both members and the general public; however, as an accommodation to members that could not physically attend and the general public, a webinar broadcast of the meeting was made available live in listen-only mode.

Matt Trout, seconded by Cory Sheehy, moved for approval of the minutes of February 19. The motion carried by unanimous roll call vote.

Opportunity for Public Comment – Vice Chairman Groth stated that pursuant to the Open Meetings Act, any person attending this meeting in person shall be permitted an opportunity to comment. He then asked if anyone from the public would like to make a comment. Hearing none, Vice Chairman Groth then proceeded with the meeting.

Treasurer's Report – Chris Wise reported on the February 2026 financials stating that actual member power costs are 0.2% under original budget, year to date, and the MWh sales to members is 1.5% above original budget year to date. He reported that the March 2026 invoices had been sent out on April 9th with the average cost being 1.8% below revised budget. He explained that purchased power expenses were lower than anticipated due to a favorable energy market and reliable output from IMEA's baseload units. Wise also discussed the April 2026 preliminary invoice estimates stating that those invoices would be sent out on May 11th and due on May 21st. He reported that the projected average cost for April is 1.8% under revised budget, energy is projected to be 0.6% over budget and demand to be 17.4% over revised budget.

Wise reported that IMEA members had been billed for 10 months of FY2026 for the decommissioning fund and as of February 28, 2026, the cash balance in the fund is \$1,650,634. Regarding a rating agency update, he reported that the credit update for Moody's began on April 1, 2026. All requested information was provided that same week and the review is in progress. Moody's last Credit Opinion was completed in June 2025. They affirmed an A1 rating with stable outlook. Wise stated that the Credit Opinion for Fitch was completed on April 6, 2026 and sent to the Board that same day. Fitch affirmed an AA- rating with stable outlook. With there being no questions, Rich Wallis moved to approve the Treasurer's Report, seconded by Jason Deering. The roll call vote showed all in favor.

President & CEO Report – CEO Doug Brown gave an overview of his work history and experience at the City of Springfield-CWLP beginning in 1994 as an Electrical Engineer and Project Manager. He was then promoted to Power Generation Superintendent of Projects and Construction Department in 2004. In 2008, Brown was elevated to Major Projects Development Director and then in 2015 was promoted to Chief Utility Engineer and Acting General Manager. His accomplishments include building Dallman Unit 4,

upgrading and expanding the Water Treatment Plant, completing an IRP, retiring 3 coal fired power plants, purchasing 45MW of solar, putting in 40 electric vehicle charging stations and AMI meters, completing a large carbon capture pilot project, refinancing electric and water bonds multiple times and he was involved in many IMUA legislative efforts. Brown earned a Bachelor of Science degree in Electrical Engineering along with a Master of Business Administration from the University of Illinois in Champaign and is a licensed P.E. in the State of Illinois. He previously served on the Illinois Municipal Utility Association and Prairieland Energy Boards.

CEO Brown reported that Dawn Holloway had filled the Administrative Assistant position at the front desk and had begun her employment with IMEA on March 16th. He stated that Mike Tintori was planning to retire in June of this year. Mike began at IMEA in January 2001 as the Engineering Technician Coordinator and CEO Brown wished him well in his retirement. Rob Shuff will be elevated to Mike's role upon his retirement and Keegan Combest will be taking over Rob's current position. Keegan began his employment at IMEA on March 30th after working at the Village of Rantoul for the past 15 years. Brown discussed the Consulting Contract that had been executed with Kevin Gaden to retain him for a few months for limited support. He stated that a Resource Analyst position had been approved in February as part of the budget and is needed to assist with the preparation of the IRP. IMEA Staff will be asking for the approval of that position at the June Board meeting. He also noted that Jason Reisner, the IMEA Board member from Greenup was no longer employed by the Village. The Village of Greenup is in the process of filling that vacancy. He then reminded members that the IMEA/IMUA/IPEA Annual Conference will be held in Springfield on May 14 and 15. The conference will include a vendor tradeshow, banquet, entertainment and informational speakers. Please contact Tammy Hall or DeeDee Bunch for more information or to register.

Regarding FERC updates, CEO Brown reported that discussions are ongoing regarding data centers. They will be required to have their own generation, co-locate with power plants and pledge that they will pay their fair share of the costs. He stated that FERC intends to act on these issues by the end of June. Brown discussed other FERC topics to include a Right of First Refusal with regard to new transmission lines and updating the standards for cybersecurity. He then reported on the \$1.1 billion penalty against American Efficient for brazen fraud by misrepresenting energy efficiency resources in the MISO and PJM markets.

Legislative & Regulatory Update – Staci Wilson reported that the House and Senate have begun conducting subject matter hearings with regard to data centers. She discussed that HB5513/SB4016 contains requirements for municipals/coops and how data center rate tariffs would be structured. She highlighted specific concerns with the legislation such as potentially jeopardizing tax exempt financing; the timing of the resources requirements; and ensuring that all requirements would interact appropriately with the RTO requirements.

Wilson explained that the State has begun to develop its Integrated Resource Plan based on requirements from CRGA passed last year. She stated that the 2025 Resource Adequacy Report indicated future shortfalls. As a result of those findings, a Mitigation Report is forthcoming. Wilson reported that recommendations from these state reports will generally impact resources in the regional markets.

Wilson reminded members that the Load Shedding Emergency Preparedness Training webinar is scheduled for June 2nd and 3rd. She encouraged Board members, local communication people and any personnel utilized during a power emergency should attend. She reported that the webinar topics would include NERC reliability assessment; MISO/PJM alerts and requirements for utilities; and communications from IMEA during such events.

OLD BUSINESS

Operations – Mandy Ripperda reported that there are two more scheduled auctions in PJM this year: the Base Residual Auction for Delivery Year 28/29 will be held in June and the Base Residual Auction for Delivery Year 29/30 will be held in December. She discussed the clearing price for the Third Incremental Auction for Delivery Year 26/27 which was held in March.

Ripperda reported that MISO filed a proposed tariff revision affecting the Load Modifying Resources (LMRs) on March 20th. She explained that the proposed revisions include changes to how LMRs report reductions, how LMR availability would be measured, what would be considered a full performance and how penalties are calculated. MISO has proposed an effective date of June 1, 2026. She stated that the auction for this upcoming Planning Year closed on March 31 and results are expected to post by April 28. The new Bee Hollow solar resource was included in the capacity auction starting with the Spring 2027 season.

Ripperda explained that there is volatile real-time pricing this time of year for wind resources. The combination of lower loads during shoulder months and increased generator output due to windy conditions cause LMPs to fall quickly which often results in curtailments. Subsequently, there are sudden drops in generation output, then the LMPs spike back up. Regarding solar output, she stated that due to an increase in the number of daylight hours and more direct sunlight due to the angle of the sun this time of year along with moderate temperatures, the result is very efficient generating conditions.

Ripperda stated that URGE testing will begin in June. Operations staff will confirm exact test times about one week prior to the test date and those times will depend on load, temperature and LMPs. She reported that the annual Forecasting and Distributed Energy Resources letter will be sent out at the beginning of May and reminded members to provide Operations with any changes to load growth in their town. She then reported that the Power Plant Seminar will be held during the annual conference as one of the breakout sessions on Friday, May 15th. Topics will include the Member Generation Policy, payments, outages, fuel reports, penalties and generation dispatch situations.

Trimble County (TC): Rakesh Kothakapu reported the following:

- There have not been any reportable safety incidents since the last Board meeting. Plant performance for March 2026 shows that the EAF was 73.18% and the EFOR was 4.04% both YTD. Unit 1 is currently offline due to a planned outage to replace the stack liner, turbine overhaul and boiler tube replacement. This is an extended outage to support the stack liner project and the unit is projected to come online in early June. Unit 2 is currently online with no planned outage until Spring 2027. Regarding the power plant stack refurbishment, the demolition of the fiberglass liner for Unit 1 has been completed, the first two liner pieces are in place and welding has begun. The fabrication of the

final can and elbow connection has also been completed and is ready to be assembled to the new liner.

Prairie State (PSGC): Rakesh Kothakapu reported the following:

- There have not been any reportable safety incidents since the last Board meeting and as of April 15th, it has been 500 days without any lost time or recordable injuries. Plant performance until March 2026 YTD shows that the EAF was 90.4% and the EFOR was 8.3%. Unit 1 had an outage due to a primary superheat tube leak, but is currently online for full load. Unit 2 had a short outage due to a furnace wall tube leak, but is currently available for full load.

Local Transmission and Generation – Rakesh Kothakapu reported on the following:

- Ameren Export Study – Ameren finalized the export studies for three towns, however, Ameren is proposing a protection system on their side. Staff is working with Ameren to investigate reasonable options. Staff is also working with Ameren to finalize the metering and other logistics in Waterloo to export and to meet MISO requirements. Staff is still waiting for Ameren to issue the export study results for Casey and also working with Ameren to complete the export studies for Carlyle, Flora and Red Bud. IMEA Staff is in the process of drafting the WCA agreements for members with 138kV delivery points. Staff is trying to minimize provisions that are more restrictive in the WCAs that are already in the MISO tariff.
- IMEA-Flora – VI Power is upgrading the switchgear and controls which are scheduled to be completed and tested by the end of this month. Regarding the Flora fuel system refurbishment, IMEA Staff is working with two local vendors to refurbish the existing fuel tanks. Preliminary testing of the fuel indicated organic impurities. Staff is obtaining quotes from these vendors to complete the project and if the scope of the refurbishment expands, Staff will explore the option to replace the fuel tanks.
- Oglesby – The City requested an additional 34.5kV delivery point near its Mallick Road sub in 2024. The substation portion is now complete pending final interconnection. IMEA meter technicians are working with the City's consultant on metering equipment with an anticipated completion by June 2026. Staff is also working on a load study to assist the City for potential future growth opportunities.
- Metropolis – Following an outage, it was discovered that the meter and CTs at the 9th Street sub were damaged. The old Ameren meter was installed on Metropolis' pole, although Ameren's standards require meters to be installed on the Ameren side of the delivery point. The existing meter pole and platform were removed and a new meter structure which is owned by Ameren was installed. This work was completed on April 2nd.
- Ameren – Network Operating Committee (NOC) Meeting – Scheduled for mid-May, this meeting between IMEA Staff and Ameren is to discuss several projects simultaneously and contemplate issues that are impacting the members.

Kothakapu thanked Mike Tintori for his many years of service to the Agency and wished him well in his retirement.

Update on Solar Projects – Eric Weinant reported that SolAmerica is unable to obtain the initial financing in conjunction with the USDA PACE funding. He explained that IMEA Staff and SolAmerica have continued discussions on these projects without PACE funding, although without this funding, the cost of the power from the projects is much higher. Weinant reported that SolAmerica has introduced a new

potential partner and IMEA Staff are currently working to make sure the proposals are financially achievable.

Weinant reported that the Princeton solar site is currently under partial outage due to the damage caused by wind damage. The developer is waiting on the manufacturer for replacement equipment which are under warranty. He explained that there is only minimal impact to IMEA as a small amount of power has been purchased from the grid as replacement.

Regarding the Bee Hollow Solar project, Weinant reported that solar panel installation has begun and substations are expected to be ready by summer. He stated that the project is scheduled to be synchronized to the grid in mid-July and commercial by November 2026.

Weinant gave an update on the battery pilot project in which the Board approved issuing a Member RFP at the February meeting. He explained that since the February Board meeting, IMEA Staff has issued the BESS Study and the Member RFP. Weinant discussed the timelines for the Member RFP to include June 5 to submit an RFP proposal, select host sites in the fall and then request Board authorization to issue a Developer RFP.

Update on Legal Matters – General Counsel Troy Fodor reported on the following matters:

- Ameren Transmission Company of Illinois (ATXI) (ICC Docket No. 26-0081) – ATXI filed its Petition for a Certificate of Public Convenience and Necessity (CPCN) before the Illinois Commerce Commission on January 29, 2026 for the Peru-Princeton line project. IMEA signed a JOA with ATXI on October 24, 2025 to partially own the project. IMEA filed its petition to intervene on March 6, 2026. Several parties, including landowners and the City of Peru, have filed testimony on alternative routing issues. The next hearing is scheduled for June 8, 2026.
- MISO Filing to Revise Tariff to Expand Load Modifying Resource Penalties and Related Provisions (ER26-1882-000) – MISO has an existing penalty structure for Load Modifying Resource nonperformance. Filed on March 20, 2026, MISO proposes to add more penalties to include additional monetary penalties based on auction clearing prices and cost of new entry; expanded disqualification criteria; capacity replacement non-compliance charge; penalties for partial performance; penalties for changing availability of units prior to receiving scheduling/setpoint instructions and penalties applied to individual units and no netting across units. MISO also seeks to place limits on planned outage exemptions and penalize BTMG for normal forced outages. These changes would take effect on June 1, 2026 after all the BTMG have already been registered for the Planning Year. IMEA intervened on March 31, 2026 and filed a protest on April 10, 2026.
- International Transmission Co. et al. v. Midcontinent Independent System Operator, Inc. et al. (EL26-58-000) – Filed on April 7, 2026, Complainants are challenging MISO's and SPP's competitive solicitation process for certain transmission projects and Ameren is one of the Complainants. Complainants compare competitive projects with non-competitive transmission projects citing differences in price and construction time. Complainants are seeking revisions to MISO's and SPP's transmission expansion planning frameworks to consider whether a solicitation is necessary. IMEA is reviewing this filing, but has not intervened.
- PJM Co-Location Order Compliance Filing (Docket ER26-1088-000) – Filed on January 20, 2026, this filing by PJM was in response to a FERC Order on December 18, 2025 in the show cause proceeding citing the tariff was unjust and unreasonable. The FERC Order on April 16, 2026 rejected

PJM's changes to the definition on Co-Located Load and ordered PJM to define "Provisional Interconnection Service." Further compliance filing is required.

- PJM Filing to Revise Tariff to Comply with Show Cause Order to Establish Rules for Co-Located Load (ER26-1479-000) – Filed on February 23, 2026, this PJM filing is in response to the FERC Order on December 18, 2025 and establishes new rules for co-location and BTMG. These changes would not significantly affect IMEA's non-retail BTMG in PJM. IMEA intervened and is actively monitoring the proceeding.

Fodor reported that there are no significant changes to the pending matters listed below. All are awaiting FERC decisions.

- MISO Filing to Revise Tariff to Implement Demand Response and Emergency Resource Reforms (Docket No. ER25-1886) – Filed April 4, 2025, MISO proposed to accredit Demand Response and Emergency Resources based on availability during emergencies. This would impact BTM generation. IMEA protested. MISO refiled under ER25-1886-001 on September 26, 2025.
- North Dakota Public Service Commission et al. v. MISO (EL25-109-000) – A number of state public service commissions filed a Complaint against MISO on July 30, 2025 alleging that MISO misstated the regional value of its Tranche 2.1 transmission expansion project. Comments were filed by transmission developers, transmission customers, environmental groups and elected officials among others.
- Coalition of Midwest Power Producers, Inc. et al. v. Midcontinent Independent System Operator, Inc. (Docket No. EL26-35-000) – MISO computer software glitch caused PY2025/26 capacity prices to clear too high resulting in reallocation of capacity revenue between LSEs and generators.

Fodor reported that these matters have been completed.

- Commonwealth Edison Company filing to Amend Attachment H-13A (Docket No. ER25-2129, then EL25-94-000) – On May 1, 2025, ComEd filed a revision to its formula rate that would include Asset Retirement Obligations and Costs (AROs and ARCs) through a footnote. FERC ordered Settlement Judge procedures on July 9, 2025. A Settlement Agreement was filed by ComEd on February 27, 2026. ComEd will not include AROs and ARCs in its rate base until depreciation studies are conducted and new filing is made. The ARO and ARC depreciation/accretion will be collected as a regulatory asset and expensed as actual costs are accrued. The uncontested settlement is pending FERC approval.

NEW BUSINESS

Resolution #26-04-975 – Approval of Distributed Energy Resource Management Program – Hubert Murray provided a timeline for implementing a Distributed Energy Resource Management program beginning in the second quarter of this year through 2027. This includes vendor onboarding and platform setup; member rollout and customer enrollment; smart thermostat control demand-side management and possibly incorporating other distributed energy resources and virtual power plant integration at a later time. He reported that the timeline is contingent upon contract negotiations, member authorization and associated deployment logistics. Murray reviewed the vendor bids along with the evaluation criteria. He stated that the Resolution establishes the program allowing members' residential customers to enroll their smart devices and potentially other distributed energy resources in the future. The program supports peak

reduction and grid reliability and aligns with PJM and MISO requirements. The Resolution authorizes the President & CEO to execute agreements and implement this program. Bob Coble moved to approve this Resolution, seconded by Larry Hanrahan. The roll call vote showed unanimous approval with the exception of the representative from Chatham voting in the negative.

Committee Appointments and OMA/FOIA Officer Appointments – CEO Brown presented the committee appointments for the next fiscal year based upon the recommendations from Chairman Cook for the Board’s review and approval. He also recommended that Troy Fodor and Staci Wilson continue as the Freedom of Information Act (FOIA) and Open Meetings Act (OMA) officers for the next fiscal year. Larry Hanrahan moved to approve the committee appointments and the OMA/FOIA officer appointments for upcoming FY 2026-27. The motion was seconded by Cory Sheehy and the roll call vote showed unanimous approval.

Resolution #26-04-976 – Establishing the Schedule of Meetings for the 2026-2027 Fiscal Year - CEO Brown reviewed the IMEA Executive Board/Board of Director’s meeting schedule for the upcoming fiscal year. Mike Kirk moved to approve the Resolution, seconded by Matt Trout. The roll call vote showed unanimous approval.

Update on Integrated Resource Plan (IRP) – Rakesh Kothakapu reported that the Clean and Reliability Grid Affordability Act (CRGA) requires municipalities and joint action agencies to conduct an IRP every 5 years. Members may adopt IMEA’s IRP, but members will still be required to provide notices via their website and billing. He stated that IMEA Staff will help coordinate this effort with the municipalities. He reviewed the requirements of an IRP to include technically feasible, cost-effective portfolio scenarios, consistent with RTO reliability obligations, potential options for constructing or procuring renewable energy resources to meet 40% of energy needs by 2030, and for meeting CEJA emission reduction requirements or supplying 100% of total projected load through carbon-free resources in combination with storage resources and demand programs by 2045. Kothakapu provided a tentative timeline for the IRP and noted that January 1, 2027 is the deadline to initiate the IRP.

CEO Brown thanked the current Executive Board Members and Committee Members for their service over the past year and congratulated the incoming Executive Board Members and Committee Members. He also stated that all IMEA Board members are always invited to attend and speak at any Executive Board meeting.

With there being no other new business, Vice Chairman Brian Groth asked for a motion to adjourn the meeting. The motion was made by Larry Hanrahan, seconded by J.R. Landeck and carried unanimously by voice vote. The meeting was adjourned at 11:25 a.m.

Respectfully submitted,

Secretary/Treasurer

**ILLINOIS MUNICIPAL ELECTRIC AGENCY
BOARD OF DIRECTORS
THURSDAY, APRIL 23, 2026**

MEMBERS PRESENT

Bethany	Shannon Risley
Bushnell	Joe Fosdyck
Breese	Jason Deering
Carlyle	Brad Myers
Casey	Ryan Staley
Chatham	Pat McCarthy
Flora	Bob Coble
Freeburg	Matt Trout
Marshall	Cory Sheehy
Naperville	Brian Groth
Peru	Kevin Minnick
Princeton	Jeff Mangrich
Rantoul	Matt Caldwell
Red Bud	Josh Eckart
Riverton	Jim Mileham
Rock Falls	Larry Hanrahan
Roodhouse	Rich Wallis
St. Charles	Peter Suhr
Sullivan	Mike Kirk
Waterloo	J.R. Landeck
Winnetka	Nick Narhi

MEMBERS ABSENT

Altamont	Larry Taylor
Cairo	Larry Klein
Carmi	David Coston
Fairfield	Mayor Gary Moore
Farmer City	Adam Turpen
Greenup	Vacant
Highland	Dan Cook
Ladd	Pat Barry
Metropolis	Michael Gentry
Mascoutah	Cody Hawkins
Oglesby	Rich Baldrige

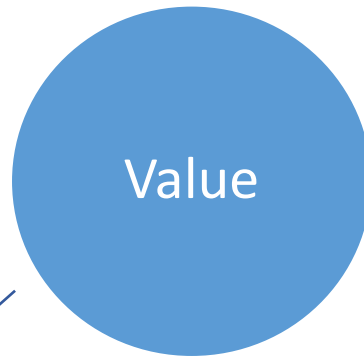
OTHERS PRESENT

IMEA	Doug Brown
IMEA	Troy Fodor
IMEA	Chris Wise
IMEA	Mandy Ripperda
IMEA	Eric Weinant
IMEA	Rakesh Kothakapu
IMEA	Glenn Cunningham
IMEA	Adam Baker
IMEA	Jaken Hicks
IMEA	Staci Wilson
IMEA	Danny Chung
IMEA	Jonathon Wygant
IMEA	Rodd Whelpley
IMEA	Tammy Hall
IMEA	Ellen Woehrmann
IMEA	Hubert Murray
IMEA	Shadi Ahanchi
Guest	Giovanni McLean (St. Charles)
Guest	Raheel Arshed (Naperville)

LISTEN ONLY VIA WEBINAR

Carmi	David Coston
Ladd	Pat Barry
Guest	Greg Hubert
Guest	Jean Korte
Guest	Debi Mader

Proposed Mission Statement



- Reliability
- Affordability
- Sustainability
- Robust Advocacy



- High Quality
- Integrity Driven Excellence
- Responsive to Member Needs



- Local Control
- Local Benefit

“The collective mission of the IMEA, IMUA and IPEA is to advance the value of local control by providing reliable, affordable, and sustainable utility services and advocacy that empowers our member communities through collaboration and integrity-driven excellence.”

**RESOLUTION APPROVING NEW DELIVERY POINT
FOR THE CITY OF RED BUD**

WHEREAS, the Illinois Municipal Electric Agency (“IMEA” or “Agency”) and the City of Red Bud (“Red Bud”) have heretofore entered into a Power Sales Contract, dated April 30, 2009, pursuant to which Red Bud purchases the full requirements of electric power and energy to serve the load of the customers in its service area through September 30, 2035, and a new Power Sales Contract, dated August 5, 2024 that has a term beginning on October 1, 2035; and

WHEREAS, Schedule A of the Power Sales Contract identifies, by location and voltage, the Delivery Points where the electric power and energy purchased under the Contract are delivered by IMEA and received by Red Bud; and

WHEREAS, the Public Utility Regulatory Policies Act (“PURPA”) requires utilities (including small utilities and public power utilities) to interconnect renewable generating facilities that meet the definition of Qualifying Facility (“QF”) with their electric distribution systems, to pay QFs for excess energy delivered to their distribution systems at a rate equal to avoided cost, and to provide supplemental and backup electric service to the utility's customers that own and operate the QF; and

WHEREAS, Red Bud is required to arrange for the sales to IMEA of excess power delivered to the City’s electric distribution system by QFs or, in the alternative, buy the excess energy from the QFs and sell it to IMEA at IMEA’s avoided cost; IMEA has accepted the obligation to purchase such excess power delivered to Red Bud’s electric distribution system from QFs; and

WHEREAS, a customer of Red Bud that owns and operates a commercial business is proposing to install or has installed a photovoltaic solar facility (1,000 kWAC) on a single building structure on its property; Red Bud has or will soon approve the interconnection and parallel operation of the solar facilities with its distribution system, and Red Bud and the customer have or will soon execute a Facilities Interconnection Agreement; it is anticipated that the electricity production from the solar facilities will exceed the customer's electricity requirements during a number of hours each day and that the excess energy will be delivered to the Red Bud electric distribution system on an “as available” basis; the customer has or will take such actions as are required to become properly certified as a QF, and has requested that IMEA purchase its excess energy; and

WHEREAS, IMEA Staff is preparing the form of an agreement with Red Bud and the customer pursuant to which the customer will deliver excess energy on an “as available” basis to the Red Bud electric distribution system; Red Bud will maintain its system, including the metering equipment at the customer's properties, administer the interconnections with the customer, and provide IMEA with appropriate metering information; and IMEA will pay the customer for such excess energy at a rate equal to IMEA's avoided cost, all in accordance with FERC's PURPA regulations; and

WHEREAS, the QF agreement with the Red Bud customer will become an additional resource in the IMEA resource portfolio and the interconnection and metering point of the

customer's solar facilities with the Red Bud electric distribution system will be a new Delivery Point and Point of Measurement under the Power Sales Contract; and

WHEREAS, it is appropriate that the IMEA Board of Directors approve the new Delivery Point and Point of Measurement and authorize the President & CEO to complete the preparation, negotiation and finalization of the QF agreement and the implementation thereof, including the issuance of an updated Schedule A to the Power Sales Contracts to reflect the new Delivery Point and Point of Measurement.

NOW, THEREFORE, BE IT RESOLVED BY THE BOARD OF DIRECTORS OF THE ILLINOIS MUNICIPAL ELECTRIC AGENCY:

Section 1. The Board of Directors of the Illinois Municipal Electric Agency hereby approves the new Delivery Point and Point of Measurement for the City of Red Bud under the Power Sales Contract at the point of interconnection and metering point of the QF customer's facilities with the Red Bud electric distribution system.

Section 2. The Board of Directors of the Illinois Municipal Electric Agency hereby authorizes the President & CEO to prepare, negotiate, and determine the final form of and execute the QF agreement described in the prefatory statements above. The President & CEO is further authorized to take all steps and execute any other agreements, amendments or other documents reasonably necessary or appropriate in the implementation, administration and enforcement of the QF agreement authorized herein. The execution by the President & CEO of all such agreements, amendments and other documents is hereby approved, ratified and confirmed.

Section 3. Upon completion of the interconnection of the QF customer's facilities with the Red Bud electric distribution system and execution of the QF agreement authorized herein, the President & CEO, or such other employee of IMEA as he shall designate, is authorized to and shall issue a revised Schedule A of the Power Sales Contract currently in effect between IMEA and the City of Red Bud and a Schedule A to the new Power Sales Contract between IMEA and the City of Red Bud that has a term beginning on October 1, 2035, each showing the new Delivery Point and Point of Measurement, and such revised Schedule As shall be effective as of the effective date of the QF agreement.

Section 4. This resolution shall take effect immediately upon its passage.

ADOPTED: _____, 2026

SIGNED: _____, 2026

BY: _____
Chairman

ATTEST: _____
Secretary/Treasurer



Financial Statements as of March 31, 2026



Illinois Municipal Electric Agency

TABLE OF CONTENTS

Statement of Net Positon	1-2
Statement of Revenues, Expenses and Changes in Net Postion	3
Statement of Cash Flows	4
Graph and Schedule of Sales to Members	5-6
Schedule of Operating Expenses	7-8
Schedule of Monthly Investment Activity	9-10
Schedule of Debt Coverage(110%)	11

Unaudited Financial Statements as of March 31, 2026



Illinois Municipal Electric Agency

STATEMENT OF NET POSITION

	<u>March 31, 2026</u>	<u>March 31, 2025</u>
ASSETS AND DEFERRED OUTFLOWS OF RESOURCES		
<u>UTILITY PLANT IN SERVICE</u>		
Prairie State	\$939,762,143.51	\$936,800,297.54
Trimble County Units 1 & 2	372,847,105.28	381,408,449.58
Mobile Generation Equipment	3,216,609.02	3,216,609.02
Winnetka 138 Interconnect	500,000.00	500,000.00
Other Property and Equipment	13,390,202.49	13,346,198.34
Total Utility Plant in Services (at cost)	<u>1,329,716,060.30</u>	<u>1,335,271,554.48</u>
Less: Accumulated Depreciation	<u>(499,877,494.67)</u>	<u>(471,689,744.69)</u>
Net Utility Plant in Service	<u>829,838,565.63</u>	<u>863,581,809.79</u>
<u>CONSTRUCTION WORK IN PROGRESS</u>		
Prairie State	7,063,019.12	6,898,626.67
Trimble County Station	37,594,490.90	35,691,852.93
Transmission Project Development	6,599.25	0.00
Net Construction Work in Progress	<u>44,664,109.27</u>	<u>42,590,479.60</u>
<u>RESTRICTED ASSETS</u>		
	<u>85,175,271.53</u>	<u>91,451,853.31</u>
<u>CURRENT ASSETS</u>		
Cash	100,069,542.27	116,016,722.61
Short-term Investments	40,913,957.74	12,028,584.38
Decommissioning Fund	1,836,953.07	0.00
Accounts Receivable	23,899,778.59	23,837,191.47
Renewable Energy Credits	0.00	0.00
Collateral Held for Others	542,602.15	533,586.97
Prepayments	31,851,082.25	31,731,540.01
Total Current Assets	<u>199,113,916.07</u>	<u>184,147,625.44</u>
<u>OTHER ASSETS</u>		
Unamortized Debt Expense	2,686,266.39	1,232,986.10
Prairie State-Other LT Assets	2,722,291.18	1,285,823.76
Change in Market Value of Investments	122,600.73	107,981.83
Other Deferred Assets	0.00	0.00
Total Other Assets	<u>5,531,158.30</u>	<u>2,626,791.69</u>
<u>DEFERRED OUTFLOWS OF RESOURCES</u>		
Total Deferred Outflows of Resources	<u>1,167,443.30</u>	<u>12,844,594.22</u>
TOTAL ASSETS	<u><u>\$1,165,490,464.10</u></u>	<u><u>\$1,197,243,154.05</u></u>



Illinois Municipal Electric Agency

STATEMENT OF NET POSITION

	<u>March 31, 2026</u>	<u>March 31, 2025</u>
<u>NET POSITION</u>	<u>\$534,670,049.62</u>	<u>\$490,279,343.33</u>
 <u>NON-CURRENT LIABILITIES</u>		
Revenue Bonds (excludes current maturities)	505,660,000.00	591,875,000.00
Unamortized Premium	42,116,730.16	24,144,448.89
Other Long-term Debt-PNC LOC	0.00	0.00
Other Liabilities	9,622,782.09	15,632,955.33
Other Deferred Liabilities	0.00	0.00
Total Non-Current Liabilities	<u>557,399,512.25</u>	<u>631,652,404.22</u>
 <u>CURRENT LIABILITIES</u>		
Accounts Payable and Accrued Expenses		
Accounts Payable		
Purchased Power	8,891,370.47	8,304,030.61
Jointly-owned facilities	8,186,303.44	8,510,455.24
Other	70,976.30	287,622.02
Collateral Due to Others	543,248.81	534,398.31
Other Current Liabilities	100,592.62	104,137.62
Total Accounts Payable and Accrued Expenses	<u>17,792,491.64</u>	<u>17,740,643.80</u>
Current Liabilities Payable from Restricted Assets		
Current Maturities of Revenue Bonds	50,794,999.94	51,725,000.00
Interest Accrued	4,833,410.65	5,845,762.70
Total Current Liabilities	<u>73,420,902.23</u>	<u>75,311,406.50</u>
 Total Liabilities	 <u>630,820,414.48</u>	 <u>706,963,810.72</u>
 TOTAL NET POSITION AND LIABILITIES	 <u>\$1,165,490,464.10</u>	 <u>\$1,197,243,154.05</u>



Illinois Municipal Electric Agency

STATEMENT OF REVENUES, EXPENSES AND CHANGES IN NET POSITION

	One Month Ended March 31, 2026	Eleven Month(s) Ended March 31, 2026	Eleven Month(s) Ended March 31, 2025
<u>OPERATING REVENUES</u>			
Sales to Members	\$23,999,927.42	\$312,680,335.72	\$296,644,219.60
Other Electric Revenue	0.00	0.00	0.00
Other income	549,504.88	4,523,850.95	8,878,210.17
Total Operating Revenues	<u>24,549,432.30</u>	<u>317,204,186.67</u>	<u>305,522,429.77</u>
<u>OPERATING EXPENSES</u>			
Purchased power	3,490,472.30	55,073,294.03	57,537,884.48
Transmission	5,370,604.26	70,873,912.36	56,313,752.56
Trimble County Units 1 & 2:			
Fuel	1,242,750.82	20,082,140.50	20,669,903.23
Operations and Maintenance	1,092,015.86	8,969,892.17	7,490,905.21
Prairie State Generating Company:			
Fuel	1,799,741.38	21,865,067.06	18,204,169.15
Operations and Maintenance	2,427,683.95	29,867,014.65	31,257,669.98
Member Payments:			
Fuel Reimbursements	59,627.38	1,522,612.75	1,120,381.39
Capacity Payments	781,978.00	8,670,888.93	7,539,926.90
Generation Payments	0.00	15,267.45	13,193.40
Other Utility Operations	155,120.66	5,169,708.36	1,984,430.82
Administration and General	775,894.62	8,689,854.92	8,523,564.95
Depreciation & Depletion Expense	2,160,829.07	29,920,689.27	33,394,759.50
Total Operating Expenses	<u>19,356,718.30</u>	<u>260,720,342.45</u>	<u>244,050,541.57</u>
Operating Income	<u>5,192,714.00</u>	<u>56,483,844.22</u>	<u>61,471,888.20</u>
<u>NON-OPERATING REVENUE (EXPENSES)</u>			
Interest Income	703,332.05	8,159,316.59	9,699,761.99
Interest Expense on Revenue Bonds	(2,539,588.62)	(30,199,799.62)	(34,982,288.66)
Interest Expense on PNC LOC	0.00	0.00	0.00
Federal BABS Revenue	194,493.48	3,435,820.63	5,691,658.09
Amortization Expense	553,463.77	4,395,434.60	1,714,786.61
Other Revenue	4,199.49	147,124.68	514,995.03
Total Non-Operating Expenses	<u>(1,084,099.83)</u>	<u>(14,062,103.12)</u>	<u>(17,361,086.94)</u>
CHANGE IN NET POSITION	4,108,614.17	42,421,741.10	44,110,801.26
Net Position - Beginning of Period	<u>530,561,435.45</u>	<u>492,248,308.52</u>	<u>446,168,542.07</u>
NET POSITION - END OF PERIOD	<u><u>\$534,670,049.62</u></u>	<u><u>\$534,670,049.62</u></u>	<u><u>\$490,279,343.33</u></u>



Illinois Municipal Electric Agency

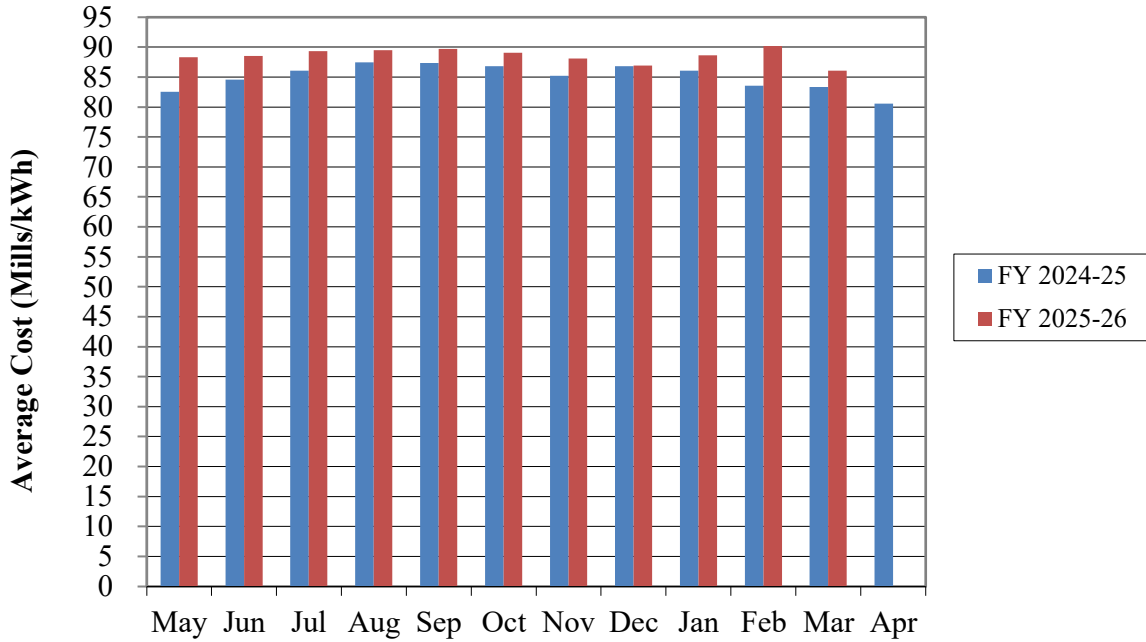
STATEMENT OF CASH FLOW

	One Month Ended March 31, 2026	Eleven Month(s) Ended March 31, 2026	Eleven Month(s) Ended March 31, 2025
CASH FLOWS FROM OPERATING ACTIVITIES			
Received from power sales	\$23,991,111	\$299,933,379	\$285,091,770
Received from sale of RECs	0	2,489,065	2,791,891
Paid to suppliers for purchased power and transmission	(9,063,028)	(124,812,785)	(113,124,511)
Paid to suppliers and employees for other services	(6,520,809)	(87,575,698)	(79,690,262)
Cash Flows from Operating Activities	<u>8,407,274</u>	<u>90,033,961</u>	<u>95,068,888</u>
CASH FLOWS FROM CAPITAL AND RELATED FINANCING ACTIVITIES			
Debt principal paid	\$0	(\$560,390,000)	(\$50,005,000)
Interest paid	0	(31,236,605)	(38,706,918)
BABS Payment from Federal Government	0	4,602,033	6,333,895
State Grant Received(Paid)	0	0	0
Acquisition and construction of capital assets	(670,599)	(10,686,313)	(13,790,629)
Preliminary engineering and survey charges	0	0	0
Proceeds from issuance of debt	0	473,245,000	0
Payment/Proceeds from PNC LOC	0	0	0
Premium received on debt issuance	0	46,320,976	0
Payment of Bond Issuance Costs	0	(2,635,974)	0
Funds Used in Refunding	0	0	0
Loss on refunding	0	(13,884,076)	0
Payment of ARO Liability	0	0	(26,416)
Payment of Arbitrage Rebate Liability	0	0	0
Cash Flows from Capital and Related Financing Activities	<u>(670,599)</u>	<u>(94,664,959)</u>	<u>(96,195,068)</u>
CASH FLOWS FROM INVESTING ACTIVITIES			
Interest income	703,332	\$8,159,321	9,699,762
Payments to Members for Capital Costs	0	0	0
Purchase of long term investment	(6,667,407)	(105,039,535)	(89,662,259)
Maturity of long term investment	0	116,062,318	58,528,000
Cash Flows from Investing Activities	<u>(5,964,075)</u>	<u>19,182,104</u>	<u>(21,434,497)</u>
Net Change in Cash and Cash Equivalents	1,772,600	14,551,106	62,393,323
Cash and Cash Equivalents - Beginning of Period	101,293,858	88,515,352	76,766,597
CASH AND CASH EQUIVALENTS - END OF PERIOD	<u>\$103,066,458</u>	<u>\$103,066,458</u>	<u>\$139,159,920</u>
RECONCILE CASH AND CASH EQUIVALENTS TO THE BALANCE SHEET			
Restricted investments		\$85,175,272	\$91,451,853
Cash		100,069,542	116,016,723
Short-term investments		40,913,958	12,028,584
Decommissioning Fund		1,836,953	0
Total Cash and Investments		<u>227,995,725</u>	<u>219,497,160</u>
Less: Long-term investments		<u>(124,929,267)</u>	<u>(80,337,240)</u>
TOTAL CASH AND CASH EQUIVALENTS		<u>\$103,066,458</u>	<u>\$139,159,920</u>
RECONCILE OPERATING INCOME TO CASH FLOWS FROM OPERATING ACTIVITIES			
Operating income	\$5,192,714	\$56,483,844	\$61,471,888
Noncash Items Included in Operating Income:			
Depreciation and Depletion	2,160,829	29,920,689	33,394,760
Other non-cash transactions	0	3,108,904	463,658
Changes in Current Assets and Liabilities:			
Accounts receivable	832,789	(2,538,182)	(2,878,949)
Renewable Energy Credits	0	2,489,065	2,791,891
Prepayments	175,957	575,279	(2,255,823)
Accounts payable:			
Purchased power	(201,951)	1,134,421	727,126
Jointly owned facilities	1,393,634	(363,024)	1,412,902
Other	(1,180,912)	(739,624)	(22,703)
Change in Regulatory Asset/Liability	0	0	0
Other current liabilities	34,215	(37,410)	(35,863)
NET CASH FLOWS FROM OPERATING ACTIVITIES	<u>\$8,407,274</u>	<u>\$90,033,961</u>	<u>\$95,068,888</u>

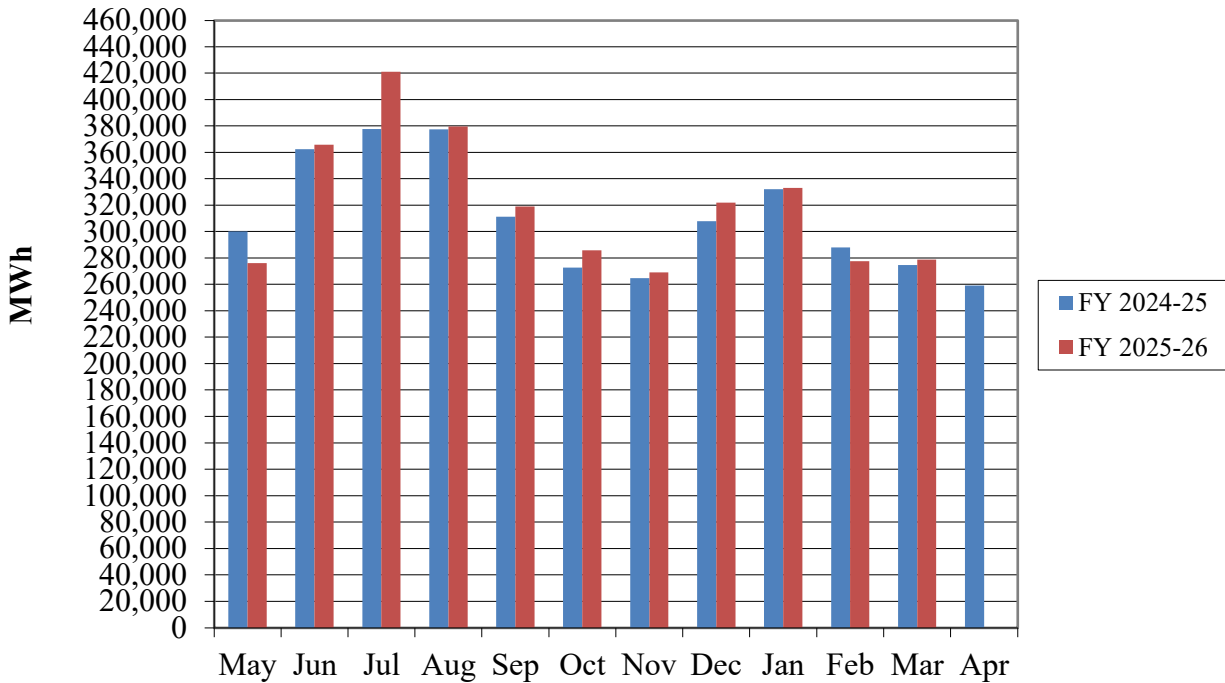


Illinois Municipal Electric Agency

IMEA Participating Member Average Cost



IMEA Monthly Energy Sales to Participating Members





Illinois Municipal Electric Agency

SCHEDULE OF POWER SALES

	One Month Ended March 31, 2026	One Month Ended March 31, 2025	Eleven Month(s) Ended March 31, 2026	Eleven Month(s) Ended March 31, 2025
POWER SALES				
Altamont	\$164,867.14	\$153,070.00	\$2,131,654.20	\$2,036,303.15
Bethany	48,100.12	45,277.40	733,808.52	715,301.39
Breese	348,863.82	317,388.25	4,569,206.68	4,300,657.11
Bushnell	197,566.02	211,546.84	2,567,713.29	2,515,704.74
Cairo	440,930.89	387,450.05	4,561,810.42	3,985,991.63
Carlyle	222,574.25	205,114.21	2,943,013.69	2,786,600.93
Carmi	328,227.33	313,787.15	4,519,887.86	4,274,539.77
Casey	174,737.94	173,935.25	2,461,863.65	2,336,790.52
Chatham	549,296.24	498,775.67	7,672,320.01	7,044,424.12
Fairfield	362,400.27	348,032.32	4,853,628.82	4,578,261.83
Farmer City	123,561.26	104,140.82	1,533,261.21	1,446,956.17
Flora	761,473.27	686,431.46	9,012,844.49	8,535,531.08
Freeburg	275,430.30	257,737.22	3,627,488.74	3,507,608.11
Greenup	119,652.99	109,789.44	1,510,110.27	1,448,750.74
Highland	798,826.99	720,518.14	10,655,617.40	10,076,344.69
Ladd	62,968.99	66,935.74	876,686.73	848,766.51
Marshall	394,605.11	369,791.62	4,890,775.96	4,744,446.33
Mascoutah	485,022.44	417,033.92	6,220,755.62	5,476,294.89
Metropolis	429,092.71	435,762.17	5,809,341.44	5,939,712.83
Naperville	7,926,970.02	7,865,705.54	107,444,803.00	103,475,655.33
Oglesby	378,932.08	359,715.76	4,818,749.61	4,479,545.62
Peru	1,458,339.62	1,497,342.44	18,532,009.79	17,516,908.27
Princeton	640,011.98	591,332.80	8,290,259.34	7,861,865.96
Rantoul	1,195,901.46	1,063,455.94	14,402,864.37	13,288,169.62
Red Bud	310,705.14	302,770.13	4,120,271.61	3,984,138.26
Riverton	199,505.61	182,834.49	2,605,471.55	2,438,929.21
Rock Falls	432,844.91	417,943.30	5,980,304.80	5,354,776.11
Roodhouse	76,451.43	72,383.70	1,007,107.94	971,971.99
St. Charles	3,198,438.75	3,012,591.07	40,097,374.08	38,100,301.51
Sullivan	463,432.91	411,802.39	5,705,251.34	5,094,607.23
Waterloo	629,477.68	532,800.74	7,968,728.96	7,488,640.89
Winnetka	800,717.75	754,752.85	10,555,350.33	9,989,723.06
Total Power Sales to Participating Members	<u>\$23,999,927.42</u>	<u>\$22,887,948.82</u>	<u>\$312,680,335.72</u>	<u>\$296,644,219.60</u>
kWh Sales to Participating Members	278,827,148	274,598,048	3,527,979,893	3,468,996,405
Participating Member Average Cost (Mills/kWh)	\$86.07	\$83.35	\$88.63	\$85.51



Illinois Municipal Electric Agency

SCHEDULE OF OPERATING EXPENSES

	One Month Ended March 31, 2026	Eleven Month(s) Ended March 31, 2026	Budget Year Ended April 30, 2026	Percent of Budget Expended as of March 31, 2026
PURCHASED POWER				
FPL Wind	\$1,925,441.14	\$15,146,707.22	\$17,464,000.00	86.73%
Big River Solar	190,382.41	1,641,811.85	1,840,000.00	89.23%
Green River	478,526.93	3,237,321.00	3,857,000.00	83.93%
Constellation	85,000.00	930,000.00	1,015,000.00	91.63%
Louisville Gas and Electric	0.00	0.00	3,000.00	0.00%
PJM	(4,387,762.51)	(48,660,004.51)	(39,798,000.00)	122.27%
Midwest ISO	4,910,560.52	71,448,860.03	74,430,000.00	95.99%
Other Suppliers	288,323.81	11,328,598.44	11,652,000.00	97.22%
Total Purchased Power	3,490,472.30	55,073,294.03	70,463,000.00	78.16%
TRANSMISSION				
Ameren through MISO	2,373,947.20	30,364,891.75	32,947,000.00	92.16%
PJM	3,003,169.93	37,235,048.02	34,138,000.00	109.07%
Midwest ISO	(9,573.46)	3,240,306.10	4,520,000.00	71.69%
Other Suppliers	3,060.59	33,666.49	41,000.00	82.11%
Total Transmission	5,370,604.26	70,873,912.36	71,646,000.00	98.92%
TRIMBLE COUNTY AND PRAIRIE STATE				
Fuel-Trimble County	1,210,905.93	19,439,542.44	21,399,000.00	90.84%
Scrubber reactant-Trimble County	31,844.89	642,598.06	702,000.00	91.54%
Fuel-Prairie State	1,799,741.38	21,865,067.06	24,723,000.00	88.44%
Total Fuel-Trimble County and Prairie State	3,042,492.20	41,947,207.56	46,824,000.00	89.58%
Operations and maintenance:				
Operations and Maintenance expenses-Trimble County	1,092,015.86	8,969,892.17	10,899,000.00	82.30%
Operations and Maintenance expenses-Prairie State	2,427,683.95	29,867,014.65	31,589,000.00	94.55%
Total O&M-Trimble County and Prairie State	3,519,699.81	38,836,906.82	42,488,000.00	91.41%
MEMBER PAYMENTS				
Fuel reimbursements	59,627.38	1,522,612.75	1,650,000.00	92.28%
Capacity payments	781,978.00	8,670,888.93	9,741,000.00	89.01%
Generation payments	0.00	15,267.45	23,000.00	66.38%
Total Member Payments	841,605.38	10,208,769.13	11,414,000.00	89.44%
OTHER UTILITY OPERATIONS				
Energy Efficiency Program	134,527.79	999,293.06	1,292,000.00	77.34%
Telemetry charges	3,673.04	40,041.04	78,000.00	51.33%
Meter testing supplies	254.83	7,960.11	18,000.00	44.22%
Mobile Generation	16,665.00	120,723.15	161,000.00	74.98%
Other	0.00	4,001,691.00	4,300,000.00	93.06%
Total Other Utility Operations	155,120.66	5,169,708.36	5,849,000.00	88.39%
ADMINISTRATION AND GENERAL				
Professional salaries	385,795.19	4,226,803.05	4,956,000.00	85.29%
Telephone	1,827.41	17,722.96	25,000.00	70.89%
Postage	181.88	3,818.51	6,000.00	63.64%
Photocopying and fax	765.61	7,325.88	16,000.00	45.79%
Office supplies	3,204.69	24,653.56	25,000.00	98.61%
Computer service and supplies	14,451.48	163,776.40	260,000.00	62.99%
Automobile	868.17	18,342.67	29,000.00	63.25%
Utilities	3,724.06	46,078.78	50,000.00	92.16%
Membership dues	32,205.27	527,421.88	657,000.00	80.28%



Illinois Municipal Electric Agency

SCHEDULE OF OPERATING EXPENSES

	One Month Ended <u>March 31, 2026</u>	Eleven Month(s) Ended <u>March 31, 2026</u>	Budget Year Ended <u>April 30, 2026</u>	Percent of Budget Expended as of <u>March 31, 2026</u>
<u>ADMINISTRATION AND GENERAL CONTINUED</u>				
Library	\$577.45	\$6,633.58	\$8,000.00	82.92%
Travel	1,211.55	17,024.95	23,000.00	74.02%
Room rentals	9,304.08	31,101.26	34,000.00	91.47%
Meals	3,130.26	21,596.88	28,000.00	77.13%
Courses, programs and seminars	149.00	9,214.50	60,000.00	15.36%
Outside services				
Legal				
General Counsel-Litigation Support	0.00	0.00	0.00	0.00%
Special counsel	0.00	0.00	10,000.00	0.00%
Other	1,021.50	20,987.00	30,000.00	69.96%
Negotiations	0.00	0.00	25,000.00	0.00%
Engineering				
Outside engineering	40,510.90	505,136.84	641,000.00	78.80%
Other				
Financial services	31,520.37	218,552.81	254,000.00	86.04%
Legislative consultant	0.00	0.00	3,000.00	0.00%
Installation and repair	624.88	6,532.16	24,000.00	27.22%
Janitorial	0.00	19,042.70	24,000.00	79.34%
Building and grounds maintenance	3,694.25	46,260.96	65,000.00	71.17%
Other services employed	10,638.62	209,045.66	259,000.00	80.71%
Insurance				
Property	5,047.80	55,848.41	66,000.00	84.62%
Automobile	1,080.42	10,776.60	12,000.00	89.81%
Liability	22,224.32	241,341.43	273,000.00	88.40%
Pensions and benefits				
Life insurance	1,067.12	13,104.78	15,000.00	87.37%
Health insurance	82,242.42	867,574.69	1,144,000.00	75.84%
Retirement	96,448.81	1,054,127.43	1,237,000.00	85.22%
Unemployment	0.00	0.00	0.00	0.00%
FICA - Medicare portion	5,579.21	62,335.26	74,000.00	84.24%
Disability insurance	2,090.60	23,251.30	27,000.00	86.12%
Workers compensation insurance	1,065.33	12,588.31	15,000.00	83.92%
Accrued vacation and sick	0.00	(8,033.33)	125,000.00	-6.43%
Miscellaneous general expenses				
General advertising	2,196.59	14,420.86	14,000.00	103.01%
Annual Report / Informational	0.00	1,664.00	7,000.00	23.77%
Member informational seminars	0.00	0.00	10,000.00	0.00%
B.O.D. Washington rally	12,387.57	55,910.06	85,000.00	65.78%
B.O.D. Regular meeting meals	7.81	6,306.95	13,000.00	48.52%
B.O.D. Generation Tour	0.00	0.00	5,000.00	0.00%
B.O.D. Annual meeting	0.00	37,433.77	46,000.00	81.38%
Sundry and bank service charges	(950.00)	(427.59)	1,000.00	-42.76%
Property taxes	0.00	94,559.00	95,000.00	99.54%
Abandoned Project Costs	0.00	0.00	0.00	0.00%
Total Administrative and General	<u>775,894.62</u>	<u>8,689,854.92</u>	<u>10,776,000.00</u>	<u>80.64%</u>
<u>DEPRECIATION AND DEPLETION EXPENSE</u>	<u>2,160,829.07</u>	<u>29,920,689.27</u>	<u>36,871,000.00</u>	<u>81.15%</u>
TOTAL OPERATING EXPENSES	<u><u>\$19,356,718.30</u></u>	<u><u>\$260,720,342.45</u></u>	<u><u>\$296,331,000.00</u></u>	<u><u>87.98%</u></u>



Illinois Municipal Electric Agency

SCHEDULE OF MONTHLY INVESTMENT ACTIVITY

	Revenue Fund	O & M Fund	Healthcare Account	Decommissioning Fund	Renewals & Replacements Fund	-----General Reserve Fund----- Gen. Reserve Account	Rate Stabil. Account	PNC LOC Account	Common Bond Debt Service Reserve
Balance at March 1, 2026:									
Cash	\$0.00	\$74,705,762.48	\$177,135.65	\$1,650,633.88	\$0.00	\$16,395,198.68	\$6,329,963.53	\$0.00	\$65,465.43
US Treasury Notes & Bonds					2,367,234.32		39,170,036.47		43,703,509.87
US Government Agencies					0.00		0.00		9,281,799.66
Interest Earned					46,420.00	595,989.66		0.00	691,643.79
Interest Receivable	0.00	45,335.45	0.00	0.00					
Total Funds	0.00	74,751,097.93	177,135.65	1,650,633.88	2,413,654.32	16,991,188.34	45,500,000.00	\$0.00	53,742,418.75
Add (Deduct):									
Cash Receipts	26,097,771.28	(60,740.24)	0.00	0.00					
Payments of Expenses	0.00	(18,279,964.62)	(13,852.97)	0.00					
Transfers From/To Other Accts.	(26,097,771.28)	19,797,252.14	0.00	180,849.00	0.00	0.00	0.00	0.00	(42,585.17)
Interest Income	0.00	184,016.47	0.00	5,470.19	7,777.53	201,599.24		0.00	165,594.63
Gain/(Loss) on Sale of Investments									
Interest Receivable	0.00	60,740.24	0.00	0.00				0.00	
Unrealized Gain/(Loss) on Investments	0.00	0.00	0.00	0.00	(37,256.68)	(648,907.10)	0.00	0.00	(852,665.11)
Transfer to Refunding Escrow									0.00
Proceeds of Refunding		0.00							
Payment of Principal & Interest								0.00	
Balance at March 31, 2026	\$0.00	\$76,452,401.92	\$163,282.68	\$1,836,953.07	\$2,384,175.17	\$16,543,880.48	\$45,500,000.00	\$0.00	\$53,012,763.10
Composition of March 31, 2026 Balance:									
Cash	\$0.00	\$76,391,661.68	\$163,282.68	\$1,836,953.07	\$46,420.00	\$16,497,407.53	\$6,970,270.38	\$0.00	\$496,161.74
US Treasury Notes & Bonds					2,329,889.43		38,529,729.62		42,871,470.20
US Government Agencies					0.00		0.00		9,268,031.64
Interest Earned					7,865.74	46,472.95		0.00	377,099.52
Interest Receivable	0.00	60,740.24	0.00	0.00					
Total Funds	\$0.00	\$76,452,401.92	\$163,282.68	\$1,836,953.07	\$2,384,175.17	\$16,543,880.48	\$45,500,000.00	\$0.00	\$53,012,763.10



Illinois Municipal Electric Agency

SCHEDULE OF MONTHLY INVESTMENT ACTIVITY

Sub-Total Interest Receivable	Sub-Total Cash & Invest.	2009C -----Debt Service Fund-----		2010A -----Debt Service Fund-----		2015A	2025A	2025A	Petty Cash	Total Interest Rec.	Total Cash & Invest.	
		Debt Service Account	Debt Service Reserve	Debt Service Account	Debt Service Reserve	Debt Service Account	Debt Service Account	Cost of Issuance Account				
Balance at March 1, 2026:												
Cash	\$99,324,159.65	\$124,604.27	\$259,700.00	\$50,845.98	\$112,200.00	\$0.00	\$18,273.03	\$0.00	\$500.00		\$99,890,282.93	
US Treasury Notes & Bonds	\$85,240,780.66	1,611,967.16	13,260,411.85	696,614.17	5,728,988.10	0.00	4,334,378.69	0.00			110,873,140.63	
US Government Agencies	\$9,281,799.66	0.00	0.00	0.00	0.00	0.00	0.00	0.00			9,281,799.66	
Interest Earned	\$1,334,053.45	1,752.18	43,932.78	758.76	18,980.58	0.00	4,096.99	0.00			1,403,574.74	
Interest Receivable	45,335.45									45,335.45	0.00	
Total Funds	\$45,335.45	195,180,793.42	1,738,323.61	13,564,044.63	748,218.91	5,860,168.68	0.00	4,356,748.71	0.00	500.00	45,335.45	221,448,797.96
Add (Deduct):												
Cash Receipts	26,037,031.04											26,037,031.04
Payments of Expenses	(18,293,817.59)							0.00	0.00			(18,293,817.59)
Transfers From/To Other Accts.	(6,162,255.31)	1,550,590.91	(259,700.00)	670,794.83	(112,200.00)	0.00	4,312,769.57	0.00				0.00
Interest Income	564,458.06	7,689.61	40,616.44	3,306.40	17,547.84	0.00	17,839.78	0.00				651,458.13
Gain/(Loss) on Sale of Investments	0.00		0.00		0.00	0.00	0.00	0.00				0.00
Interest Receivable	60,740.24	45,335.45								60,740.24		45,335.45
Unrealized Gain/(Loss) on Investments	(1,538,828.89)	(1,349.69)	(244,526.24)	(555.22)	(105,644.38)	0.00	(2,175.96)	0.00				(1,893,080.38)
Transfer to Refunding Escrow	0.00	0.00	0.00	0.00	0.00	0.00	0.00	0.00				0.00
Proceeds of Refunding	0.00							0.00				0.00
Payment of Principal & Interest	0.00	0.00			0.00	0.00	0.00	0.00				0.00
Balance at March 31, 2026	\$60,740.24	\$195,832,716.18	\$3,295,254.44	\$13,100,434.83	\$1,421,764.92	\$5,659,872.14	\$0.00	\$8,685,182.10	\$0.00	\$500.00	\$60,740.24	\$227,995,724.61
Composition of March 31, 2026 Balance:												
Cash	\$102,402,157.08	\$67,007.71	\$649.45	\$26,160.41	\$280.58	\$0.00	\$2,853.71	\$0.00	\$500.00		\$102,499,608.94	
US Treasury Notes & Bonds	83,731,089.25	3,220,905.63	13,012,917.75	1,392,792.84	5,622,061.50	0.00	8,681,468.13	0.00			115,661,235.10	
US Government Agencies	9,268,031.64	0.00	0.00	0.00	0.00	0.00	0.00	0.00			9,268,031.64	
Interest Earned	431,438.21	7,341.10	86,867.63	2,811.67	37,530.06	0.00	860.26	0.00			566,848.93	
Interest Receivable	60,740.24	0.00								60,740.24		
Total Funds	\$60,740.24	\$195,832,716.18	\$3,295,254.44	\$13,100,434.83	\$1,421,764.92	\$5,659,872.14	\$0.00	\$8,685,182.10	\$0.00	\$500.00	\$60,740.24	\$227,995,724.61

Balance Sheet Classifications:	
Restricted Investment Accounts	\$85,175,271.53
Cash and Cash Equivalents	100,069,542.27
Temporary Investments	40,913,957.74
Decommissioning Fund	1,836,953.07
	<u>\$227,995,724.61</u>

Interest Receivable \$ 60,740.24



Illinois Municipal Electric Agency

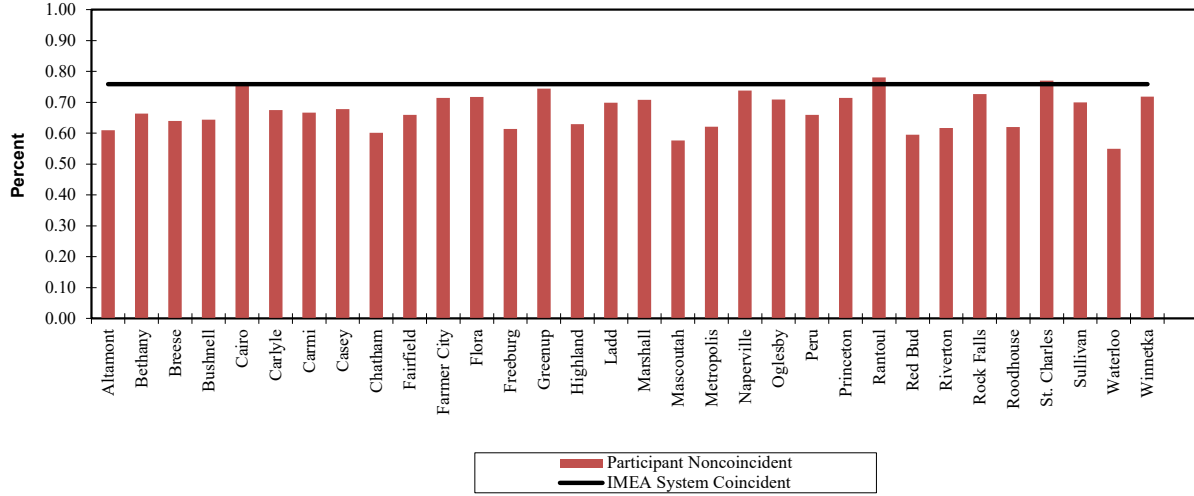
SCHEDULE OF DEBT COVERAGE(110%)

	One Month Ended March 31, 2026	Total Last 12 Months
REVENUES		
Sales for resale	\$23,999,927	\$333,553,884
Membership assessments	0	0
Other utility operations	549,505	6,945,203
Other non-utility operations	4,199	147,125
Interest income	703,332	8,960,301
Interest income used for Debt Service		0
2006 Debt Service Reserve Fund	0	0
2007A Debt Service Reserve Fund	0	0
2009ABC Debt Service Reserve Fund	0	0
2010A Debt Service Reserve	0	0
Federal BABS Revenue	194,493	3,953,700
Rate stabilization transfer	0	0
Total Revenue	<u>\$25,451,457</u>	<u>\$353,560,213</u>
OPERATIONS AND MAINTENANCE EXPENSES		
Purchased power	\$3,490,472	\$56,974,750
Transmission	5,370,604	76,326,434
Trimble County Units 1 & 2:		0
Fuel	1,242,751	21,979,678
Operations and maintenance	1,092,016	9,702,733
Prairie State Generating Company:		0
Fuel	1,799,741	23,899,001
Operations and maintenance	2,427,684	32,301,236
Member Payments:		0
Fuel reimbursements	59,627	1,550,092
Capacity payments	781,978	9,360,569
Generation payments	0	15,326
Other utility operations	155,121	5,370,347
Administration and general	775,895	10,088,082
Other	0	0
Total Operations and Maintenance Expenses	<u>\$17,195,889</u>	<u>\$247,568,248</u>
NET REVENUES	\$8,255,568	\$105,991,965
DEBT SERVICE (See calculation below)	<u>\$6,704,238</u>	<u>\$81,748,091</u>
COVERAGE PERCENTAGE	<u>123.14%</u>	<u>129.66%</u>
CUMULATIVE COVERAGE PERCENTAGE (Fiscal Year 2025-2026)	131.83%	
DEBT SERVICE		
Accrued interest-2006 bonds	\$0	\$0
Principal installment-2006 bonds	0	0
Accrued interest-2007A bonds	0	0
Principal installment-2007A bonds	0	0
Accrued interest-2007C bonds	0	0
Principal installment-2007C bonds	0	0
Accrued interest-2009A bonds	0	0
Principal installment-2009A bonds	0	0
Accrued interest-2009C bonds	371,433	8,266,791
Principal installment-2009C bonds	1,271,667	14,718,334
Accrued interest-2010A bonds	169,325	3,782,410
Principal installment-2010A bonds	541,250	6,249,170
Accrued interest-2015A bonds	0	7,905,575
Principal installment-2015A bonds	0	12,881,250
Accrued interest-2025A bonds	1,930,563	13,194,561
Principal installment-2025A bonds	2,420,000	14,750,000
Debt Service	<u>\$6,704,238</u>	<u>\$81,748,091</u>

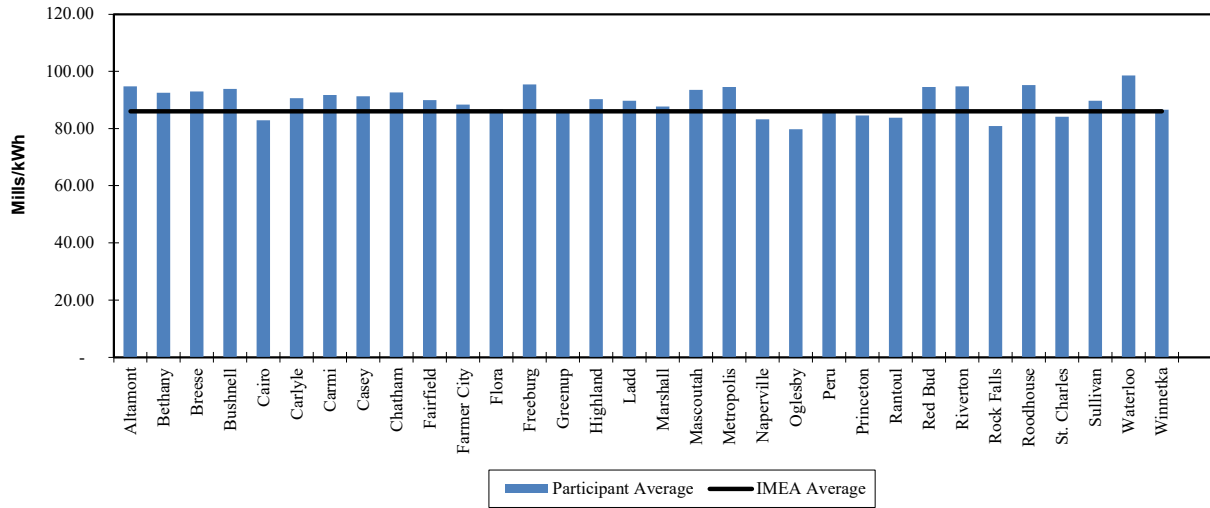


Illinois Municipal Electric Agency

**Participant Load Factor
March 2026**



**Participant Average Cost
March 2026**



Note: Actual peak demand and energy consumption is shown in the monthly operations report.
Average Cost does not reflect capacity credits to participants.

UNAUDITED



Financial Statements as of April 30, 2026



Illinois Municipal Electric Agency

TABLE OF CONTENTS

Statement of Net Positon	1-2
Statement of Revenues, Expenses and Changes in Net Postion	3
Statement of Cash Flows	4
Graph and Schedule of Sales to Members	5-6
Schedule of Operating Expenses	7-8
Schedule of Monthly Investment Activity	9-10
Schedule of Debt Coverage(110%)	11
Graph of Member Load Factor and Average Cost	12
Peak Demand	13
Demand Billing Units	14
Energy Usage	15
Revenue from Sales to Members	16
Average Cost Without Capacity Credits	17
Average Cost With Capacity Credits	18

Unaudited Financial Statements as of April 30, 2026



Illinois Municipal Electric Agency

STATEMENT OF NET POSITION

	<u>April 30, 2026</u>	<u>April 30, 2025</u>
ASSETS AND DEFERRED OUTFLOWS OF RESOURCES		
<u>UTILITY PLANT IN SERVICE</u>		
Prairie State	\$940,596,772.67	\$936,800,297.54
Trimble County Units 1 & 2	372,868,639.78	381,212,061.49
Mobile Generation Equipment	3,531,429.10	3,216,609.02
Winnetka 138 Interconnect	500,000.00	500,000.00
Other Property and Equipment	13,442,786.41	13,353,287.71
Total Utility Plant in Services (at cost)	<u>1,330,939,627.96</u>	<u>1,335,082,255.76</u>
Less: Accumulated Depreciation	<u>(501,996,232.30)</u>	<u>(474,543,741.10)</u>
Net Utility Plant in Service	<u>828,943,395.66</u>	<u>860,538,514.66</u>
<u>CONSTRUCTION WORK IN PROGRESS</u>		
Prairie State	6,442,270.49	7,218,936.38
Trimble County Station	38,181,509.70	33,861,810.88
Transmission Project Development	6,599.25	0.00
Net Construction Work in Progress	<u>44,630,379.44</u>	<u>41,080,747.26</u>
<u>RESTRICTED ASSETS</u>		
	<u>91,414,561.35</u>	<u>98,371,687.65</u>
<u>CURRENT ASSETS</u>		
Cash	98,798,551.68	86,702,740.68
Short-term Investments	40,892,463.15	40,148,296.40
Decommissioning Fund	2,023,687.37	0.00
Accounts Receivable	23,785,066.96	22,527,808.17
Renewable Energy Credits	2,101,928.13	2,489,064.88
Collateral Held for Others	543,248.81	534,398.31
Prepayments	32,248,206.11	32,426,361.02
Total Current Assets	<u>200,393,152.21</u>	<u>184,828,669.46</u>
<u>OTHER ASSETS</u>		
Unamortized Debt Expense	2,641,563.81	1,214,974.33
Prairie State-Other LT Assets	2,843,880.18	1,403,720.33
Change in Market Value of Investments	422,134.84	(776,792.18)
Other Deferred Assets	0.00	0.00
Total Other Assets	<u>5,907,578.83</u>	<u>1,841,902.48</u>
<u>DEFERRED OUTFLOWS OF RESOURCES</u>		
Total Deferred Outflows of Resources	<u>1,150,389.88</u>	<u>12,657,476.71</u>
TOTAL ASSETS	<u><u>\$1,172,439,457.37</u></u>	<u><u>\$1,199,318,998.22</u></u>



Illinois Municipal Electric Agency

STATEMENT OF NET POSITION

	<u>April 30, 2026</u>	<u>April 30, 2025</u>
<u>NET POSITION</u>	<u>\$540,173,983.77</u>	<u>\$492,248,308.52</u>
 <u>NON-CURRENT LIABILITIES</u>		
Revenue Bonds (excludes current maturities)	505,660,000.00	591,875,000.00
Unamortized Premium	41,501,510.39	23,792,717.33
Other Long-term Debt-PNC LOC	0.00	0.00
Other Liabilities	8,409,325.72	13,228,890.67
Other Deferred Liabilities	0.00	0.00
Total Non-Current Liabilities	<u>555,570,836.11</u>	<u>628,896,608.00</u>
 <u>CURRENT LIABILITIES</u>		
Accounts Payable and Accrued Expenses		
Accounts Payable		
Purchased Power	8,739,404.84	7,756,949.31
Jointly-owned facilities	8,754,909.28	8,549,327.54
Other	434,728.55	114,954.42
Collateral Due to Others	543,917.83	535,237.98
Other Current Liabilities	135,600.00	674,428.04
Total Accounts Payable and Accrued Expenses	<u>18,608,560.50</u>	<u>17,630,897.29</u>
Current Liabilities Payable from Restricted Assets		
Current Maturities of Revenue Bonds	50,795,000.00	51,725,000.00
Interest Accrued	7,291,076.99	8,818,184.41
Total Current Liabilities	<u>76,694,637.49</u>	<u>78,174,081.70</u>
 Total Liabilities	 <u>632,265,473.60</u>	 <u>707,070,689.70</u>
 TOTAL NET POSITION AND LIABILITIES	 <u>\$1,172,439,457.37</u>	 <u>\$1,199,318,998.22</u>



Illinois Municipal Electric Agency

STATEMENT OF REVENUES, EXPENSES AND CHANGES IN NET POSITION

	One Month Ended April 30, 2026	Twelve Month(s) Ended April 30, 2026	Twelve Month(s) Ended April 30, 2025
<u>OPERATING REVENUES</u>			
Sales to Members	\$22,654,932.31	\$335,335,268.03	\$317,517,767.83
Other Electric Revenue	0.00	0.00	0.00
Other income	2,479,756.65	7,003,607.60	11,299,561.75
Total Operating Revenues	<u>25,134,688.96</u>	<u>342,338,875.63</u>	<u>328,817,329.58</u>
<u>OPERATING EXPENSES</u>			
Purchased power	1,800,273.54	56,873,567.57	59,439,340.82
Transmission	6,266,311.89	77,140,224.25	61,766,274.60
Trimble County Units 1 & 2:			
Fuel	1,107,827.38	21,189,967.88	22,567,441.02
Operations and Maintenance	957,766.66	9,927,658.83	8,223,746.38
Prairie State Generating Company:			
Fuel	1,955,476.76	23,820,543.82	20,238,102.64
Operations and Maintenance	2,294,910.98	32,161,925.63	33,691,891.82
Member Payments:			
Fuel Reimbursements	68,550.82	1,591,163.57	1,147,860.29
Capacity Payments	781,978.00	9,452,866.93	8,229,607.30
Generation Payments	357.89	15,625.34	13,251.67
Other Utility Operations	80,469.12	5,250,177.48	2,185,069.07
Administration and General	963,264.02	9,653,118.94	9,921,791.73
Depreciation & Depletion Expense	2,152,018.42	32,072,707.69	36,445,144.00
Total Operating Expenses	<u>18,429,205.48</u>	<u>279,149,547.93</u>	<u>263,869,521.34</u>
Operating Income	<u>6,705,483.48</u>	<u>63,189,327.70</u>	<u>64,947,808.24</u>
<u>NON-OPERATING REVENUE (EXPENSES)</u>			
Interest Income	514,433.81	8,673,750.40	10,500,746.79
Interest Expense on Revenue Bonds	(2,457,666.40)	(32,657,466.02)	(37,954,710.37)
Interest Expense on PNC LOC	0.00	0.00	0.00
Federal BABS Revenue	188,219.49	3,624,040.12	6,209,537.87
Amortization Expense	553,463.77	4,948,898.37	1,861,388.89
Other Revenue	0.00	147,124.68	514,995.03
Total Non-Operating Expenses	<u>(1,201,549.33)</u>	<u>(15,263,652.45)</u>	<u>(18,868,041.79)</u>
CHANGE IN NET POSITION	5,503,934.15	47,925,675.25	46,079,766.45
Net Position - Beginning of Period	<u>534,670,049.62</u>	<u>492,248,308.52</u>	<u>446,168,542.07</u>
NET POSITION - END OF PERIOD	<u>\$540,173,983.77</u>	<u>\$540,173,983.77</u>	<u>\$492,248,308.52</u>



Illinois Municipal Electric Agency

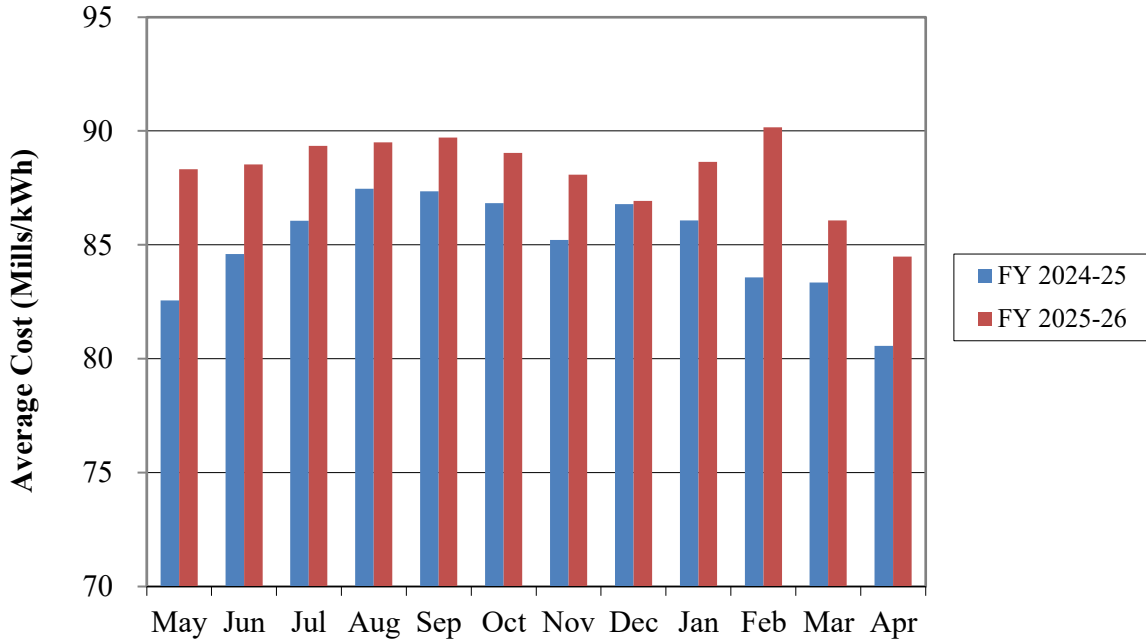
STATEMENT OF CASH FLOW

	One Month Ended April 30, 2026	Twelve Month(s) Ended April 30, 2026	Twelve Month(s) Ended April 30, 2025
CASH FLOWS FROM OPERATING ACTIVITIES			
Received from power sales	\$22,106,976	\$322,040,355	\$307,075,364
Received from sale of RECs	(2,101,928)	387,137	302,826
Paid to suppliers for purchased power and transmission	(8,218,551)	(133,031,336)	(121,025,571)
Paid to suppliers and employees for other services	(6,945,242)	(94,520,940)	(88,382,708)
Cash Flows from Operating Activities	<u>4,841,255</u>	<u>94,875,216</u>	<u>97,969,911</u>
CASH FLOWS FROM CAPITAL AND RELATED FINANCING ACTIVITIES			
Debt principal paid	\$0	(\$560,390,000)	(\$50,005,000)
Interest paid	0	(31,236,605)	(38,706,918)
BABS Payment from Federal Government	0	4,602,033	6,333,895
State Grant Received(Paid)	0	0	0
Acquisition and construction of capital assets	77,384	(10,608,929)	(12,651,846)
Preliminary engineering and survey charges	0	0	0
Proceeds from issuance of debt	0	473,245,000	0
Payment/Proceeds from PNC LOC	0	0	0
Premium received on debt issuance	0	46,320,976	0
Payment of Bond Issuance Costs	0	(2,635,974)	0
Funds Used in Refunding	0	0	0
Loss on refunding	0	(13,884,076)	0
Payment of ARO Liability	0	0	(26,416)
Payment of Arbitrage Rebate Liability	0	0	0
Cash Flows from Capital and Related Financing Activities	<u>77,384</u>	<u>(94,587,575)</u>	<u>(95,056,285)</u>
CASH FLOWS FROM INVESTING ACTIVITIES			
Interest income	514,434	\$8,673,754	10,500,747
Payments to Members for Capital Costs	0	0	0
Purchase of long term investment	(6,651,279)	(111,690,814)	(150,649,618)
Maturity of long term investment	0	116,062,318	148,984,000
Cash Flows from Investing Activities	<u>(6,136,845)</u>	<u>13,045,258</u>	<u>8,835,129</u>
Net Change in Cash and Cash Equivalents	(1,218,206)	13,332,900	11,748,755
Cash and Cash Equivalents - Beginning of Period	103,066,458	88,515,352	76,766,597
CASH AND CASH EQUIVALENTS - END OF PERIOD	<u>\$101,848,252</u>	<u>\$101,848,252</u>	<u>\$88,515,352</u>
RECONCILE CASH AND CASH EQUIVALENTS TO THE BALANCE SHEET			
Restricted investments		\$91,414,561	\$98,371,688
Cash		98,798,552	86,702,741
Short-term investments		40,892,463	40,148,296
Decommissioning Fund		2,023,687	0
Total Cash and Investments		<u>233,129,264</u>	<u>225,222,725</u>
Less: Long-term investments		<u>(131,281,011)</u>	<u>(136,707,373)</u>
TOTAL CASH AND CASH EQUIVALENTS		<u>\$101,848,252</u>	<u>\$88,515,352</u>
RECONCILE OPERATING INCOME TO CASH FLOWS FROM OPERATING ACTIVITIES			
Operating income	\$6,705,483	\$63,189,328	\$64,947,807
Noncash Items Included in Operating Income:			
Depreciation and Depletion	526,694	30,447,384	36,445,144
Other non-cash transactions	0	3,108,904	(1,403,978)
Changes in Current Assets and Liabilities:			
Accounts receivable	302,932	(2,235,251)	(1,051,685)
Renewable Energy Credits	(2,101,928)	387,137	302,826
Prepayments	(397,124)	178,155	(2,950,644)
Accounts payable:			
Purchased power	(151,966)	982,456	180,044
Jointly owned facilities	568,606	205,582	1,451,775
Other	(646,450)	(1,386,074)	50,620
Change in Regulatory Asset/Liability	0	0	0
Other current liabilities	35,007	(2,402)	(1,999)
NET CASH FLOWS FROM OPERATING ACTIVITIES	<u>\$4,841,255</u>	<u>\$94,875,216</u>	<u>\$97,969,911</u>

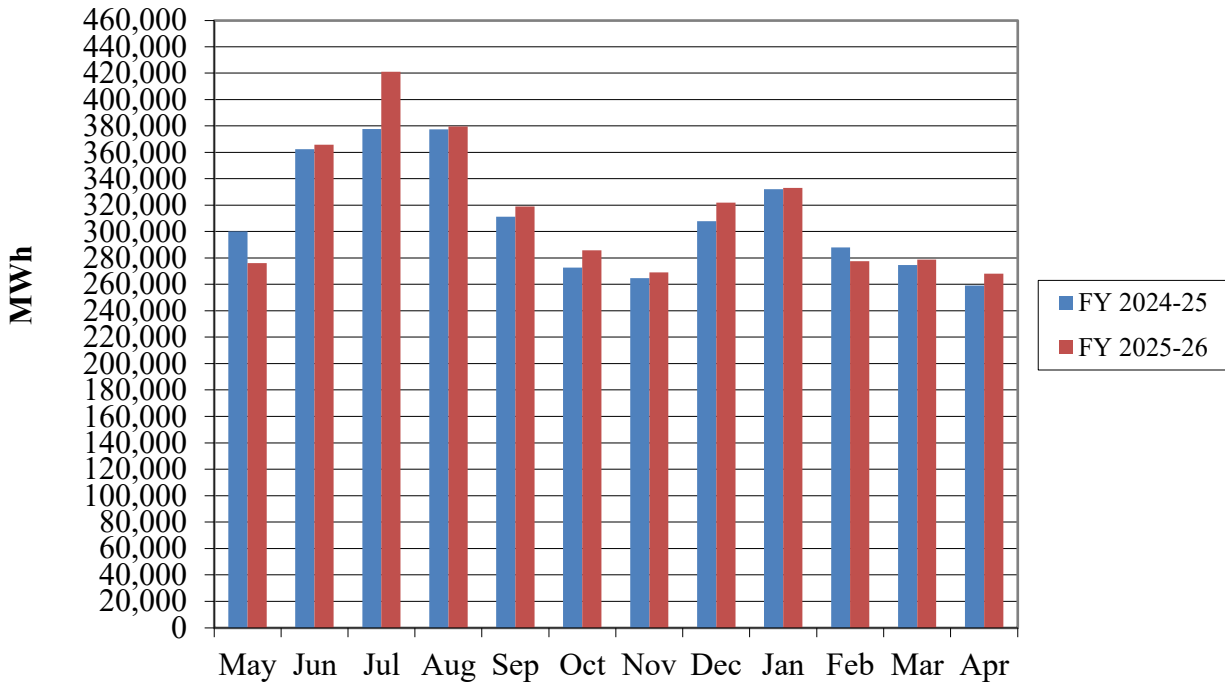


Illinois Municipal Electric Agency

IMEA Participating Member Average Cost



IMEA Monthly Energy Sales to Participating Members





Illinois Municipal Electric Agency

SCHEDULE OF POWER SALES

	One Month Ended April 30, 2026	One Month Ended April 30, 2025	Twelve Month(s) Ended April 30, 2026	Twelve Month(s) Ended April 30, 2025
POWER SALES				
Altamont	\$139,915.87	\$133,854.02	\$2,271,570.07	\$2,170,157.17
Bethany	46,276.31	40,916.00	780,084.83	756,217.39
Breese	327,893.38	298,872.78	4,897,100.06	4,599,529.89
Bushnell	173,128.32	170,313.35	2,740,841.61	2,686,018.09
Cairo	370,099.32	348,152.48	4,931,909.74	4,334,144.11
Carlyle	208,831.18	186,862.46	3,151,844.87	2,973,463.39
Carmi	316,344.14	289,823.23	4,836,232.00	4,564,363.00
Casey	154,116.61	148,578.80	2,615,980.26	2,485,369.32
Chatham	544,790.64	474,816.45	8,217,110.65	7,519,240.57
Fairfield	331,360.01	307,575.76	5,184,988.83	4,885,837.59
Farmer City	100,656.90	92,947.02	1,633,918.11	1,539,903.19
Flora	729,222.12	668,405.49	9,742,066.61	9,203,936.57
Freeburg	255,681.64	225,776.95	3,883,170.38	3,733,385.06
Greenup	113,770.78	98,398.77	1,623,881.05	1,547,149.51
Highland	748,247.83	653,739.76	11,403,865.23	10,730,084.45
Ladd	59,541.66	57,645.28	936,228.39	906,411.79
Marshall	353,509.59	332,690.89	5,244,285.55	5,077,137.22
Mascoutah	455,969.90	401,482.89	6,676,725.52	5,877,777.78
Metropolis	450,758.74	422,384.52	6,260,100.18	6,362,097.35
Naperville	7,455,312.34	7,132,676.08	114,900,115.34	110,608,331.41
Oglesby	371,404.59	326,686.40	5,190,154.20	4,806,232.02
Peru	1,445,705.20	1,342,174.84	19,977,714.99	18,859,083.11
Princeton	593,049.44	520,848.02	8,883,308.78	8,382,713.98
Rantoul	1,118,561.92	1,001,653.51	15,521,426.29	14,289,823.13
Red Bud	309,779.96	280,544.20	4,430,051.57	4,264,682.46
Riverton	186,847.39	174,782.43	2,792,318.94	2,613,711.64
Rock Falls	388,334.37	349,087.02	6,368,639.17	5,703,863.13
Roodhouse	65,984.17	57,993.74	1,073,092.11	1,029,965.73
St. Charles	3,043,426.63	2,758,536.44	43,140,800.71	40,858,837.95
Sullivan	425,713.99	380,954.12	6,130,965.33	5,475,561.35
Waterloo	612,137.70	513,004.31	8,580,866.66	8,001,645.20
Winnetka	758,559.67	681,370.22	11,313,910.00	10,671,093.28
Total Power Sales to Participating Members	<u>\$22,654,932.31</u>	<u>\$20,873,548.23</u>	<u>\$335,335,268.03</u>	<u>\$317,517,767.83</u>
kWh Sales to Participating Members	268,162,837	259,077,832	3,796,142,730	3,728,074,237
Participating Member Average Cost (Mills/kWh)	\$84.48	\$80.57	\$88.34	\$85.17



Illinois Municipal Electric Agency

SCHEDULE OF OPERATING EXPENSES

	One Month Ended April 30, 2026	Twelve Month(s) Ended April 30, 2026	Budget Year Ended April 30, 2026	Percent of Budget Expended as of April 30, 2026
PURCHASED POWER				
FPL Wind	\$1,899,972.03	\$17,046,679.25	\$17,464,000.00	97.61%
Big River Solar	190,080.69	1,831,892.54	1,840,000.00	99.56%
Green River	491,988.01	3,729,309.01	3,857,000.00	96.69%
Constellation	85,000.00	1,015,000.00	1,015,000.00	100.00%
Louisville Gas and Electric	0.00	0.00	3,000.00	0.00%
PJM	(5,578,378.80)	(54,238,383.31)	(39,798,000.00)	136.28%
Midwest ISO	4,424,267.17	75,873,127.20	74,430,000.00	101.94%
Other Suppliers	287,344.44	11,615,942.88	11,652,000.00	99.69%
Total Purchased Power	1,800,273.54	56,873,567.57	70,463,000.00	80.71%
TRANSMISSION				
Ameren through MISO	2,225,398.37	32,590,290.12	32,947,000.00	98.92%
PJM	3,839,681.06	41,074,729.08	34,138,000.00	120.32%
Midwest ISO	198,171.87	3,438,477.97	4,520,000.00	76.07%
Other Suppliers	3,060.59	36,727.08	41,000.00	89.58%
Total Transmission	6,266,311.89	77,140,224.25	71,646,000.00	107.67%
TRIMBLE COUNTY AND PRAIRIE STATE				
Fuel-Trimble County	1,080,274.11	20,519,816.55	21,399,000.00	95.89%
Scrubber reactant-Trimble County	27,553.27	670,151.33	702,000.00	95.46%
Fuel-Prairie State	1,955,476.76	23,820,543.82	24,723,000.00	96.35%
Total Fuel-Trimble County and Prairie State	3,063,304.14	45,010,511.70	46,824,000.00	96.13%
Operations and maintenance:				
Operations and Maintenance expenses-Trimble County	957,766.66	9,927,658.83	10,899,000.00	91.09%
Operations and Maintenance expenses-Prairie State	2,294,910.98	32,161,925.63	31,589,000.00	101.81%
Total O&M-Trimble County and Prairie State	3,252,677.64	42,089,584.46	42,488,000.00	99.06%
MEMBER PAYMENTS				
Fuel reimbursements	68,550.82	1,591,163.57	1,650,000.00	96.43%
Capacity payments	781,978.00	9,452,866.93	9,741,000.00	97.04%
Generation payments	357.89	15,625.34	23,000.00	67.94%
Total Member Payments	850,886.71	11,059,655.84	11,414,000.00	96.90%
OTHER UTILITY OPERATIONS				
Energy Efficiency Program	67,608.60	1,066,901.66	1,292,000.00	82.58%
Telemetry charges	3,701.31	43,742.35	78,000.00	56.08%
Meter testing supplies	416.24	8,376.35	18,000.00	46.54%
Mobile Generation	8,742.97	129,466.12	161,000.00	80.41%
Other	0.00	4,001,691.00	4,300,000.00	93.06%
Total Other Utility Operations	80,469.12	5,250,177.48	5,849,000.00	89.76%
ADMINISTRATION AND GENERAL				
Professional salaries	639,253.48	4,866,056.53	4,956,000.00	98.19%
Telephone	2,882.97	20,605.93	25,000.00	82.42%
Postage	313.07	4,131.58	6,000.00	68.86%
Photocopying and fax	2,660.04	9,985.92	16,000.00	62.41%
Office supplies	2,735.46	27,389.02	25,000.00	109.56%
Computer service and supplies	12,811.33	176,587.73	260,000.00	67.92%
Automobile	2,396.33	20,739.00	29,000.00	71.51%
Utilities	3,576.89	49,655.67	50,000.00	99.31%
Membership dues	123,415.83	650,837.71	657,000.00	99.06%



Illinois Municipal Electric Agency

SCHEDULE OF OPERATING EXPENSES

	One Month Ended <u>April 30, 2026</u>	Twelve Month(s) Ended <u>April 30, 2026</u>	Budget Year Ended <u>April 30, 2026</u>	Percent of Budget Expended as of <u>April 30, 2026</u>
<u>ADMINISTRATION AND GENERAL CONTINUED</u>				
Library	\$577.45	\$7,211.03	\$8,000.00	90.14%
Travel	685.80	17,710.75	23,000.00	77.00%
Room rentals	1,049.76	32,151.02	34,000.00	94.56%
Meals	2,591.23	24,188.11	28,000.00	86.39%
Courses, programs and seminars	1,195.00	10,409.50	60,000.00	17.35%
Outside services				
Legal				
General Counsel-Litigation Support	0.00	0.00	0.00	0.00%
Special counsel	0.00	0.00	10,000.00	0.00%
Other	39.50	21,026.50	30,000.00	70.09%
Negotiations	0.00	0.00	25,000.00	0.00%
Engineering				
Outside engineering	38,884.31	544,021.15	641,000.00	84.87%
Other				
Financial services	11,225.01	229,777.82	254,000.00	90.46%
Legislative consultant	0.00	0.00	3,000.00	0.00%
Installation and repair	198.82	6,730.98	24,000.00	28.05%
Janitorial	3,400.00	22,442.70	24,000.00	93.51%
Building and grounds maintenance	7,804.18	54,065.14	65,000.00	83.18%
Other services employed	46,358.89	255,404.55	259,000.00	98.61%
Insurance				
Property	5,047.80	60,896.21	66,000.00	92.27%
Automobile	1,080.42	11,857.02	12,000.00	98.81%
Liability	22,224.32	263,565.75	273,000.00	96.54%
Pensions and benefits				
Life insurance	1,506.93	14,611.71	15,000.00	97.41%
Health insurance	70,561.50	938,136.19	1,144,000.00	82.00%
Retirement	157,276.82	1,211,404.25	1,237,000.00	97.93%
Unemployment	0.00	0.00	0.00	0.00%
FICA - Medicare portion	9,637.54	71,972.80	74,000.00	97.26%
Disability insurance	2,622.37	25,873.67	27,000.00	95.83%
Workers compensation insurance	1,065.33	13,653.64	15,000.00	91.02%
Accrued vacation and sick	(214,044.82)	(222,078.15)	125,000.00	-177.66%
Miscellaneous general expenses				
General advertising	334.11	14,754.97	14,000.00	105.39%
Annual Report / Informational	0.00	1,664.00	7,000.00	23.77%
Member informational seminars	0.00	0.00	10,000.00	0.00%
B.O.D. Washington rally	(1,743.88)	54,166.18	85,000.00	63.72%
B.O.D. Regular meeting meals	847.50	7,154.45	13,000.00	55.03%
B.O.D. Generation Tour	0.00	0.00	5,000.00	0.00%
B.O.D. Annual meeting	292.73	37,726.50	46,000.00	82.01%
Sundry and bank service charges	2,500.00	2,072.41	1,000.00	207.24%
Property taxes	0.00	94,559.00	95,000.00	99.54%
Abandoned Project Costs	0.00	0.00	0.00	0.00%
Total Administrative and General	<u>963,264.02</u>	<u>9,653,118.94</u>	<u>10,776,000.00</u>	<u>89.58%</u>
<u>DEPRECIATION AND DEPLETION EXPENSE</u>	<u>2,152,018.42</u>	<u>32,072,707.69</u>	<u>36,871,000.00</u>	<u>86.99%</u>
TOTAL OPERATING EXPENSES	<u><u>\$18,429,205.48</u></u>	<u><u>\$279,149,547.93</u></u>	<u><u>\$296,331,000.00</u></u>	<u><u>94.20%</u></u>



Illinois Municipal Electric Agency

SCHEDULE OF MONTHLY INVESTMENT ACTIVITY

	Revenue Fund	O & M Fund	Healthcare Account	Decommissioning Fund	Renewals & Replacements Fund	-----General Reserve Fund----- Gen. Reserve Account	Rate Stabil. Account	PNC LOC Account	Common Bond Debt Service Reserve
Balance at April 1, 2026:									
Cash	\$0.00	\$76,391,661.68	\$163,282.68	\$1,836,953.07	\$46,420.00	\$16,497,407.53	\$6,970,270.38	\$0.00	\$496,161.74
US Treasury Notes & Bonds					2,329,889.43		38,529,729.62		42,871,470.20
US Government Agencies					0.00		0.00		9,268,031.64
Interest Earned					7,865.74	46,472.95		0.00	377,099.52
Interest Receivable	0.00	60,740.24	0.00	0.00					
Total Funds	0.00	76,452,401.92	163,282.68	1,836,953.07	2,384,175.17	16,543,880.48	45,500,000.00	\$0.00	53,012,763.10
Add (Deduct):									
Cash Receipts	25,153,062.30	(58,577.40)	0.00	0.00					
Payments of Expenses	0.00	(20,371,039.97)	(13,178.17)	0.00					
Transfers From/To Other Accts.	(25,153,062.30)	18,858,755.97	0.00	180,849.00	(46,420.00)	0.00	0.00	0.00	(473,281.48)
Interest Income	0.00	178,014.24	0.00	5,885.30	7,682.67	200,834.05		0.00	165,745.01
Gain/(Loss) on Sale of Investments									
Interest Receivable	0.00	58,577.40	0.00	0.00				0.00	
Unrealized Gain/(Loss) on Investments	0.00	0.00	0.00	0.00	(6,274.17)	(103,022.64)	0.00	0.00	(132,681.17)
Transfer to Refunding Escrow									0.00
Proceeds of Refunding		0.00							
Payment of Principal & Interest								0.00	
Balance at April 30, 2026	\$0.00	\$75,118,132.16	\$150,104.51	\$2,023,687.37	\$2,339,163.67	\$16,641,691.89	\$45,500,000.00	\$0.00	\$52,572,545.46
Composition of April 30, 2026 Balance:									
Cash	\$0.00	\$75,059,554.76	\$150,104.51	\$2,023,687.37	\$129.07	\$16,523,293.09	\$7,064,970.25	\$0.00	\$299,578.56
US Treasury Notes & Bonds					2,323,529.89		38,435,029.75		42,741,761.24
US Government Agencies					0.00		0.00		9,271,684.38
Interest Earned					15,504.71	118,398.80		0.00	259,521.28
Interest Receivable	0.00	58,577.40	0.00	0.00					
Total Funds	\$0.00	\$75,118,132.16	\$150,104.51	\$2,023,687.37	\$2,339,163.67	\$16,641,691.89	\$45,500,000.00	\$0.00	\$52,572,545.46



Illinois Municipal Electric Agency

SCHEDULE OF MONTHLY INVESTMENT ACTIVITY

Sub-Total Interest Receivable	Sub-Total Cash & Invest.	2009C -----Debt Service Fund-----		2010A -----Debt Service Fund-----		2015A	2025A	2025A	Petty Cash	Total Interest Rec.	Total Cash & Invest.	
		Debt Service Account	Debt Service Reserve	Debt Service Account	Debt Service Reserve	Debt Service Account	Debt Service Account	Cost of Issuance Account				
Balance at April 1, 2026:												
Cash	\$102,402,157.08	\$67,007.71	\$649.45	\$26,160.41	\$280.58	\$0.00	\$2,853.71	\$0.00	\$500.00		\$102,499,608.94	
US Treasury Notes & Bonds	\$83,731,089.25	3,220,905.63	13,012,917.75	1,392,792.84	5,622,061.50	0.00	8,681,468.13	0.00			115,661,235.10	
US Government Agencies	\$9,268,031.64	0.00	0.00	0.00	0.00	0.00	0.00	0.00			9,268,031.64	
Interest Earned	\$431,438.21	7,341.10	86,867.63	2,811.67	37,530.06	0.00	860.26	0.00			566,848.93	
Interest Receivable	60,740.24									60,740.24	0.00	
Total Funds	\$60,740.24	195,832,716.18	3,295,254.44	13,100,434.83	1,421,764.92	5,659,872.14	0.00	8,685,182.10	0.00	500.00	60,740.24	227,995,724.61
Add (Deduct):												
Cash Receipts	25,094,484.90											25,094,484.90
Payments of Expenses	(20,384,218.14)							0.00	0.00			(20,384,218.14)
Transfers From/To Other Accts.	(6,633,158.81)	1,609,247.82	(649.45)	696,241.24	(280.58)	0.00	4,328,599.78	0.00				0.00
Interest Income	558,161.27	11,455.41	40,412.39	4,941.50	17,459.62	0.00	29,635.94	0.00				662,066.13
Gain/(Loss) on Sale of Investments	0.00		0.00		0.00	0.00	0.00	0.00				0.00
Interest Receivable	58,577.40	60,740.24								58,577.40		60,740.24
Unrealized Gain/(Loss) on Investments	(241,977.98)	(949.69)	(39,199.28)	(408.79)	(16,935.54)	0.00	(62.91)	0.00				(299,534.19)
Transfer to Refunding Escrow	0.00	0.00	0.00	0.00	0.00	0.00	0.00	0.00				0.00
Proceeds of Refunding	0.00							0.00				0.00
Payment of Principal & Interest	0.00	0.00		0.00		0.00	0.00	0.00				0.00
Balance at April 30, 2026	\$58,577.40	\$194,286,747.66	\$4,915,007.98	\$13,100,998.49	\$2,122,538.87	\$5,660,115.64	\$0.00	\$13,043,354.91	\$0.00	\$500.00	\$58,577.40	\$233,129,263.55
Composition of April 30, 2026 Balance:												
Cash	\$101,121,317.61	\$66,193.47	\$300.96	\$25,711.85	\$130.06	\$0.00	\$1,976.86	\$0.00	\$500.00		\$101,216,130.81	
US Treasury Notes & Bonds	83,500,320.88	4,821,926.03	12,970,846.35	2,085,734.50	5,603,885.10	0.00	13,026,613.91	0.00			122,009,326.77	
US Government Agencies	9,271,684.38	0.00	0.00	0.00	0.00	0.00	0.00	0.00			9,271,684.38	
Interest Earned	393,424.79	26,888.48	129,851.18	11,092.52	56,100.48	0.00	14,764.14	0.00			632,121.59	
Interest Receivable	58,577.40	0.00								58,577.40		
Total Funds	\$58,577.40	\$194,286,747.66	\$4,915,007.98	\$13,100,998.49	\$2,122,538.87	\$5,660,115.64	\$0.00	\$13,043,354.91	\$0.00	\$500.00	\$58,577.40	\$233,129,263.55

Balance Sheet Classifications:	
Restricted Investment Accounts	\$91,414,561.35
Cash and Cash Equivalents	98,798,551.68
Temporary Investments	40,892,463.15
Decommissioning Fund	2,023,687.37
	<u>\$233,129,263.55</u>

Interest Receivable \$ 58,577.40



Illinois Municipal Electric Agency

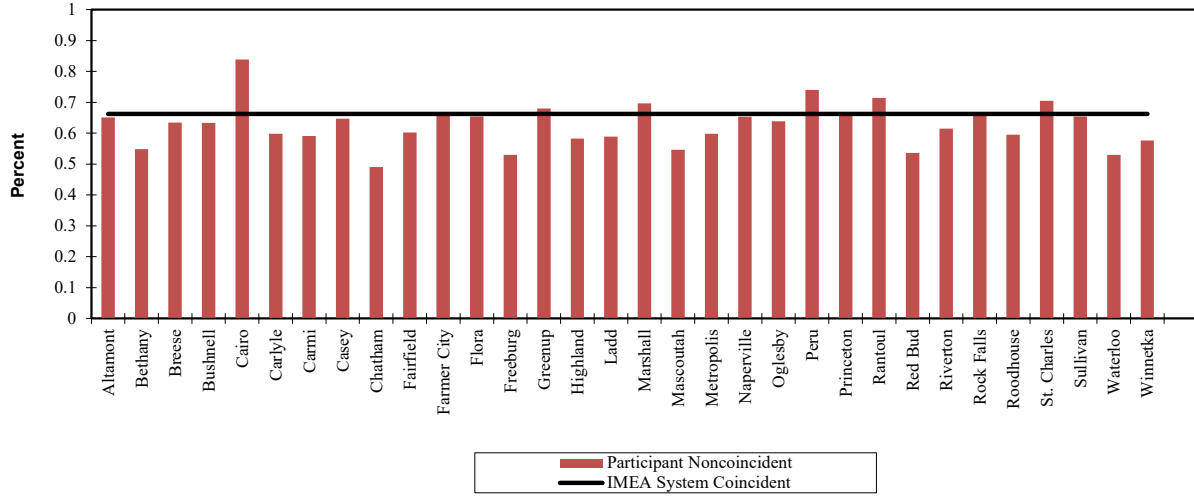
SCHEDULE OF DEBT COVERAGE(110%)

	One Month Ended April 30, 2026	Total Last 12 Months
REVENUES		
Sales for resale	\$22,654,932	\$335,335,268
Membership assessments	0	0
Other utility operations	2,479,757	7,003,608
Other non-utility operations	0	147,125
Interest income	514,434	8,673,750
Interest income used for Debt Service		0
2006 Debt Service Reserve Fund	0	0
2007A Debt Service Reserve Fund	0	0
2009ABC Debt Service Reserve Fund	0	0
2010A Debt Service Reserve	0	0
Federal BABS Revenue	188,219	3,624,040
Rate stabilization transfer	0	0
Total Revenue	<u>\$25,837,342</u>	<u>\$354,783,791</u>
OPERATIONS AND MAINTENANCE EXPENSES		
Purchased power	\$1,800,274	\$56,873,568
Transmission	6,266,312	77,140,224
Trimble County Units 1 & 2:		0
Fuel	1,107,827	21,189,968
Operations and maintenance	957,767	9,927,659
Prairie State Generating Company:		0
Fuel	1,955,477	23,820,544
Operations and maintenance	2,294,911	32,161,926
Member Payments:		0
Fuel reimbursements	68,551	1,591,164
Capacity payments	781,978	9,452,867
Generation payments	358	15,625
Other utility operations	80,469	5,250,177
Administration and general	963,264	9,653,119
Other	0	0
Total Operations and Maintenance Expenses	<u>\$16,277,187</u>	<u>\$247,076,840</u>
NET REVENUES	\$9,560,155	\$107,706,951
DEBT SERVICE (See calculation below)	<u>\$6,704,238</u>	<u>\$81,152,977</u>
COVERAGE PERCENTAGE	<u>142.60%</u>	<u>132.72%</u>
CUMULATIVE COVERAGE PERCENTAGE (Fiscal Year 2025-2026)	132.72%	
DEBT SERVICE		
Accrued interest-2006 bonds	\$0	\$0
Principal installment-2006 bonds	0	0
Accrued interest-2007A bonds	0	0
Principal installment-2007A bonds	0	0
Accrued interest-2007C bonds	0	0
Principal installment-2007C bonds	0	0
Accrued interest-2009A bonds	0	0
Principal installment-2009A bonds	0	0
Accrued interest-2009C bonds	371,433	7,618,206
Principal installment-2009C bonds	1,271,667	14,772,501
Accrued interest-2010A bonds	169,325	3,483,876
Principal installment-2010A bonds	541,250	6,273,753
Accrued interest-2015A bonds	0	6,404,517
Principal installment-2015A bonds	0	10,305,000
Accrued interest-2025A bonds	1,930,563	15,125,124
Principal installment-2025A bonds	2,420,000	17,170,000
Debt Service	<u>\$6,704,238</u>	<u>\$81,152,977</u>

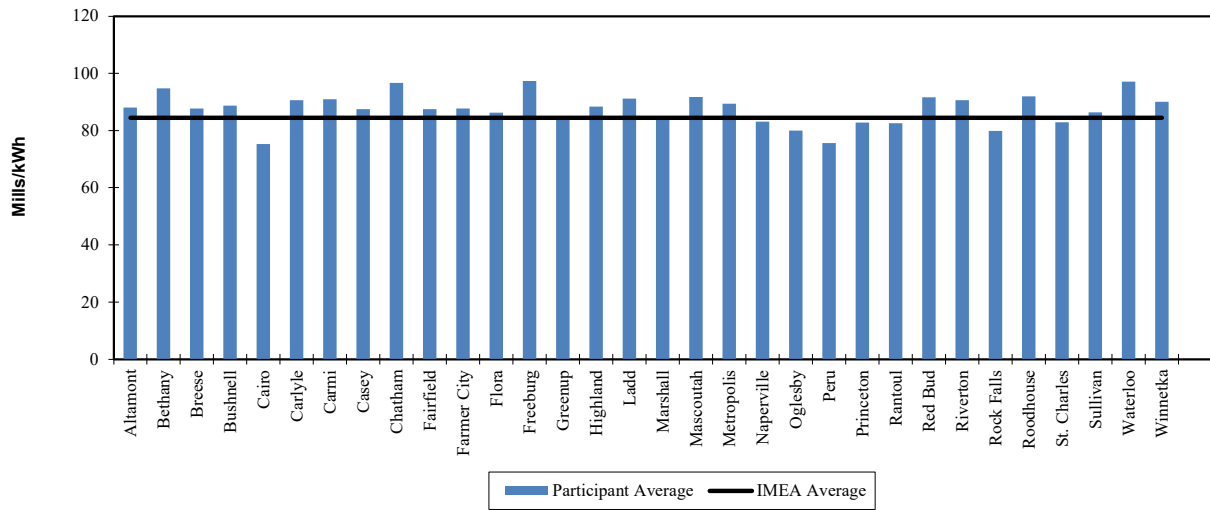


Illinois Municipal Electric Agency

Participant Load Factor April 2026



Participant Average Cost April 2026



Note: Actual peak demand and energy consumption is shown in the monthly operations report.
Average Cost does not reflect capacity credits to participants.



Illinois Municipal Electric Agency

PEAK DEMAND

Member	Non-Coincident Peak Demand FY 2024-25 (kW)	Non-Coincident Peak Demand FY 2025-26 (kW)	Increase/ (Decrease) (kW)	Percentage Change
Altamont	6,250	6,972	722	11.55%
Bethany	2,384	2,571	187	7.84%
Breese	13,006	13,127	121	0.93%
Bushnell	7,518	7,433	(85)	-1.13%
Cairo	9,782	10,037	255	2.61%
Carlyle	8,878	8,779	(99)	-1.12%
Carmi	13,679	14,127	448	3.28%
Casey	7,485	7,309	(176)	-2.35%
Chatham	26,649	26,216	(433)	-1.62%
Fairfield	14,506	14,915	409	2.82%
Farmer City	4,370	4,350	(20)	-0.46%
Flora	23,437	24,461	1,024	4.37%
Freeburg	11,361	11,257	(104)	-0.92%
Greenup	4,403	4,637	234	5.31%
Highland	33,180	34,000	820	2.47%
Ladd	2,680	2,653	(27)	-1.01%
Marshall	13,459	13,080	(379)	-2.82%
Mascoutah	18,536	20,017	1,481	7.99%
Metropolis	17,585	18,223	638	3.63%
Naperville	347,082	320,368	(26,714)	-7.70%
Oglesby	14,076	13,571	(505)	-3.59%
Peru	48,702	51,218	2,516	5.17%
Princeton	26,278	24,589	(1,689)	-6.43%
Rantoul	36,332	36,955	623	1.71%
Red Bud	12,824	12,285	(539)	-4.20%
Riverton	7,798	7,667	(131)	-1.68%
Rock Falls	20,186	19,013	(1,173)	-5.81%
Roodhouse	3,162	3,024	(138)	-4.36%
St. Charles	114,963	109,758	(5,205)	-4.53%
Sullivan	14,726	15,223	497	3.37%
Waterloo	25,288	25,115	(173)	-0.68%
Winnetka	35,237	36,209	972	2.76%
Total Participating Members	945,802	919,159	(26,643)	-2.82%



Illinois Municipal Electric Agency

DEMAND BILLING UNITS

Member	Demand Billing Units (kW-mo) FY 2024-25	Demand Billing Units (kW-mo) FY 2025-26	Increase/ (Decrease) (kW-mo)	Percentage Change
Altamont	54,614	56,449	1,835	3.36%
Bethany	19,768	20,316	548	2.77%
Breese	115,677	118,978	3,301	2.85%
Bushnell	68,967	68,178	(789)	-1.14%
Cairo	101,233	109,095	7,862	7.77%
Carlyle	75,836	77,498	1,662	2.19%
Carmi	116,586	121,270	4,684	4.02%
Casey	63,547	64,724	1,177	1.85%
Chatham	213,657	226,866	13,209	6.18%
Fairfield	128,611	132,051	3,440	2.67%
Farmer City	39,914	40,653	739	1.85%
Flora	222,569	231,325	8,756	3.93%
Freeburg	96,837	98,468	1,631	1.68%
Greenup	38,189	38,656	467	1.22%
Highland	286,116	296,042	9,926	3.47%
Ladd	22,814	23,290	476	2.09%
Marshall	122,065	122,084	19	0.02%
Mascoutah	158,108	175,444	17,336	10.96%
Metropolis	159,545	152,435	(7,110)	-4.46%
Naperville	2,770,288	2,811,198	40,910	1.48%
Oglesby	126,423	132,837	6,414	5.07%
Peru	485,557	504,064	18,507	3.81%
Princeton	216,861	223,013	6,152	2.84%
Rantoul	338,167	357,190	19,023	5.63%
Red Bud	113,500	113,725	225	0.20%
Riverton	64,451	67,620	3,169	4.92%
Rock Falls	161,127	166,100	4,973	3.09%
Roodhouse	26,784	27,239	455	1.70%
St. Charles	984,795	1,008,330	23,535	2.39%
Sullivan	137,463	148,018	10,555	7.68%
Waterloo	208,910	218,011	9,101	4.36%
Winnetka	278,420	287,591	9,171	3.29%
Total Participating Members	8,017,399	8,238,758	221,359	2.76%



Illinois Municipal Electric Agency

ENERGY USAGE

Member	Energy Usage FY 2024-25 (kWh)	Energy Usage FY 2025-26 (kWh)	Increase/ (Decrease) (kWh)	Percentage Change
Altamont	25,156,435	24,845,957	(310,478)	-1.23%
Bethany	8,470,102	8,092,815	(377,287)	-4.45%
Breese	53,471,963	54,660,654	1,188,691	2.22%
Bushnell	30,288,731	29,728,352	(560,379)	-1.85%
Cairo	55,363,656	61,886,070	6,522,414	11.78%
Carlyle	34,200,748	34,843,042	642,294	1.88%
Carmi	52,388,506	52,298,650	(89,856)	-0.17%
Casey	28,465,794	28,574,322	108,528	0.38%
Chatham	84,983,565	87,489,665	2,506,100	2.95%
Fairfield	58,128,531	58,890,861	762,330	1.31%
Farmer City	17,330,411	17,763,079	432,668	2.50%
Flora	110,082,290	111,160,435	1,078,145	0.98%
Freeburg	42,168,704	41,463,587	(705,117)	-1.67%
Greenup	18,254,092	18,505,213	251,121	1.38%
Highland	127,602,811	128,808,011	1,205,200	0.94%
Ladd	10,544,372	10,197,120	(347,252)	-3.29%
Marshall	61,236,581	60,764,338	(472,243)	-0.77%
Mascoutah	69,694,423	74,659,602	4,965,179	7.12%
Metropolis	74,052,268	69,717,367	(4,334,901)	-5.85%
Naperville	1,274,124,448	1,289,668,209	15,543,761	1.22%
Oglesby	59,021,260	61,221,550	2,200,290	3.73%
Peru	233,252,778	236,293,908	3,041,130	1.30%
Princeton	102,232,023	103,829,056	1,597,033	1.56%
Rantoul	173,873,095	181,645,327	7,772,232	4.47%
Red Bud	46,404,638	47,390,561	985,923	2.12%
Riverton	28,194,408	29,298,186	1,103,778	3.91%
Rock Falls	66,244,371	73,616,393	7,372,022	11.13%
Roodhouse	11,590,808	11,397,297	(193,511)	-1.67%
St. Charles	491,316,486	499,175,715	7,859,229	1.60%
Sullivan	63,681,350	68,824,938	5,143,588	8.08%
Waterloo	90,269,543	91,889,747	1,620,204	1.79%
Winnetka	125,985,046	127,542,703	1,557,657	1.24%
Total Participating Members	3,728,074,237	3,796,142,730	68,068,493	1.83%



Illinois Municipal Electric Agency

REVENUE FROM SALES TO MEMBERS

Member	Total Revenue FY 2024-25 (\$)	Total Revenue FY 2025-26 (\$)	Increase/ (Decrease) (\$)	Percentage Change
Altamont	\$2,170,157.17	\$2,271,570.07	\$101,412.90	4.67%
Bethany	756,217.39	780,084.83	23,867.44	3.16%
Breese	4,599,529.89	4,897,100.06	297,570.17	6.47%
Bushnell	2,686,018.09	2,740,841.61	54,823.52	2.04%
Cairo	4,334,144.11	4,931,909.74	597,765.63	13.79%
Carlyle	2,973,463.39	3,151,844.87	178,381.48	6.00%
Carmi	4,564,363.00	4,836,232.00	271,869.00	5.96%
Casey	2,485,369.32	2,615,980.26	130,610.94	5.26%
Chatham	7,519,240.57	8,217,110.65	697,870.08	9.28%
Fairfield	4,885,837.59	5,184,988.83	299,151.24	6.12%
Farmer City	1,539,903.19	1,633,918.11	94,014.92	6.11%
Flora	9,203,936.57	9,742,066.61	538,130.04	5.85%
Freeburg	3,733,385.06	3,883,170.38	149,785.32	4.01%
Greenup	1,547,149.51	1,623,881.05	76,731.54	4.96%
Highland	10,730,084.45	11,403,865.23	673,780.78	6.28%
Ladd	906,411.79	936,228.39	29,816.60	3.29%
Marshall	5,077,137.22	5,244,285.55	167,148.33	3.29%
Mascoutah	5,877,777.78	6,676,725.52	798,947.74	13.59%
Metropolis	6,362,097.35	6,260,100.18	(101,997.17)	-1.60%
Naperville	110,608,331.41	114,900,115.34	4,291,783.93	3.88%
Oglesby	4,806,232.02	5,190,154.20	383,922.18	7.99%
Peru	18,859,083.11	19,977,714.99	1,118,631.88	5.93%
Princeton	8,382,713.98	8,883,308.78	500,594.80	5.97%
Rantoul	14,289,823.13	15,521,426.29	1,231,603.16	8.62%
Red Bud	4,264,682.46	4,430,051.57	165,369.11	3.88%
Riverton	2,613,711.64	2,792,318.94	178,607.30	6.83%
Rock Falls	5,703,863.13	6,368,639.17	664,776.04	11.65%
Roodhouse	1,029,965.73	1,073,092.11	43,126.38	4.19%
St. Charles	40,858,837.95	43,140,800.71	2,281,962.76	5.58%
Sullivan	5,475,561.35	6,130,965.33	655,403.98	11.97%
Waterloo	8,001,645.20	8,580,866.66	579,221.46	7.24%
Winnetka	10,671,093.28	11,313,910.00	642,816.72	6.02%
Total Participating Members	\$317,517,767.83	\$335,335,268.03	\$17,817,500.20	5.61%



Illinois Municipal Electric Agency

AVERAGE COST WITHOUT CAPACITY CREDITS

Member	Average Cost FY 2024-25 Mills/kWh	Average Cost FY 2025-26 Mills/kWh	Increase/ (Decrease) Mills/kWh	Percentage Change
Altamont	\$86.27	\$91.43	\$5.16	5.98%
Bethany	89.28	96.39	7.11	7.96%
Breese	86.02	89.59	3.57	4.15%
Bushnell	88.68	92.20	3.52	3.97%
Cairo	78.29	79.69	1.40	1.79%
Carlyle	86.94	90.46	3.52	4.05%
Carmi	87.13	92.47	5.34	6.13%
Casey	87.31	91.55	4.24	4.86%
Chatham	88.48	93.92	5.44	6.15%
Fairfield	84.05	88.04	3.99	4.75%
Farmer City	88.86	91.98	3.12	3.51%
Flora	83.61	87.64	4.03	4.82%
Freeburg	88.53	93.65	5.12	5.78%
Greenup	84.76	87.75	2.99	3.53%
Highland	84.09	88.53	4.44	5.28%
Ladd	85.96	91.81	5.85	6.81%
Marshall	82.91	86.31	3.40	4.10%
Mascoutah	84.34	89.43	5.09	6.04%
Metropolis	85.91	89.79	3.88	4.52%
Naperville	86.81	89.09	2.28	2.63%
Oglesby	81.43	84.78	3.35	4.11%
Peru	80.85	84.55	3.70	4.58%
Princeton	82.00	85.56	3.56	4.34%
Rantoul	82.19	85.45	3.26	3.97%
Red Bud	91.90	93.48	1.58	1.72%
Riverton	92.70	95.31	2.61	2.82%
Rock Falls	86.10	86.51	0.41	0.48%
Roodhouse	88.86	94.15	5.29	5.95%
St. Charles	83.16	86.42	3.26	3.92%
Sullivan	85.98	89.08	3.10	3.61%
Waterloo	88.64	93.38	4.74	5.35%
Winnetka	84.70	88.71	4.01	4.73%
IMEA Member Average	\$85.17	\$88.34	\$3.17	3.72%



Illinois Municipal Electric Agency

AVERAGE COST WITH CAPACITY CREDITS

Member	Average Cost FY 2024-25 Mills/kWh	Average Cost FY 2025-26 Mills/kWh	Increase/ (Decrease) Mills/kWh	Percentage Change
Altamont	\$83.13	\$86.67	\$3.54	4.26%
Bethany	89.28	96.39	7.11	7.96%
Breese	78.94	82.12	3.18	4.03%
Bushnell	79.38	83.39	4.01	5.05%
Cairo	78.29	79.69	1.40	1.79%
Carlyle	78.23	80.63	2.40	3.07%
Carmi	78.86	83.90	5.04	6.39%
Casey	84.55	87.42	2.87	3.39%
Chatham	88.48	93.92	5.44	6.15%
Fairfield	84.05	88.04	3.99	4.75%
Farmer City	75.75	77.81	2.06	2.72%
Flora	82.41	85.85	3.44	4.17%
Freeburg	80.80	84.76	3.96	4.90%
Greenup	84.76	87.75	2.99	3.53%
Highland	79.86	83.90	4.04	5.06%
Ladd	85.96	91.81	5.85	6.81%
Marshall	78.79	80.94	2.15	2.73%
Mascoutah	84.34	89.43	5.09	6.04%
Metropolis	85.91	89.79	3.88	4.52%
Naperville	86.81	89.09	2.28	2.63%
Oglesby	81.43	84.78	3.35	4.11%
Peru	76.59	79.80	3.21	4.19%
Princeton	67.54	72.62	5.08	7.52%
Rantoul	79.48	82.18	2.70	3.40%
Red Bud	88.10	87.90	-0.20	-0.23%
Riverton	92.70	95.31	2.61	2.82%
Rock Falls	84.12	79.70	-4.42	-5.25%
Roodhouse	88.86	94.15	5.29	5.95%
St. Charles	83.16	86.42	3.26	3.92%
Sullivan	81.79	83.26	1.47	1.80%
Waterloo	80.96	85.39	4.43	5.47%
Winnetka	76.82	80.45	3.63	4.73%
IMEA Member Average	\$82.96	\$85.85	\$2.89	3.48%