

IMEA Energy Efficiency and Conservation Incentives

Application Process

IMEA Incentives

- Mirror DCEO offerings for Ameren and Commonwealth Edison Public Sector Program
- Incentives are greater than ComEd/Ameren commercial/industrial programs
- Covers
 - Energy Efficient Lighting
 - Energy Efficient Motors
 - Heating, Ventilation and Air Conditioning
 - Refrigeration
 - Customized Programs (Induction or LED Street Lights)

Incentive Basis

- DCEO Format is to eliminate Incremental price between standard and energy efficient equipment.
- Custom Program for special projects allows \$.08 per annual kWh saved, but no more than 75% of total project costs (including labor and engineering) or 100% of incremental savings.

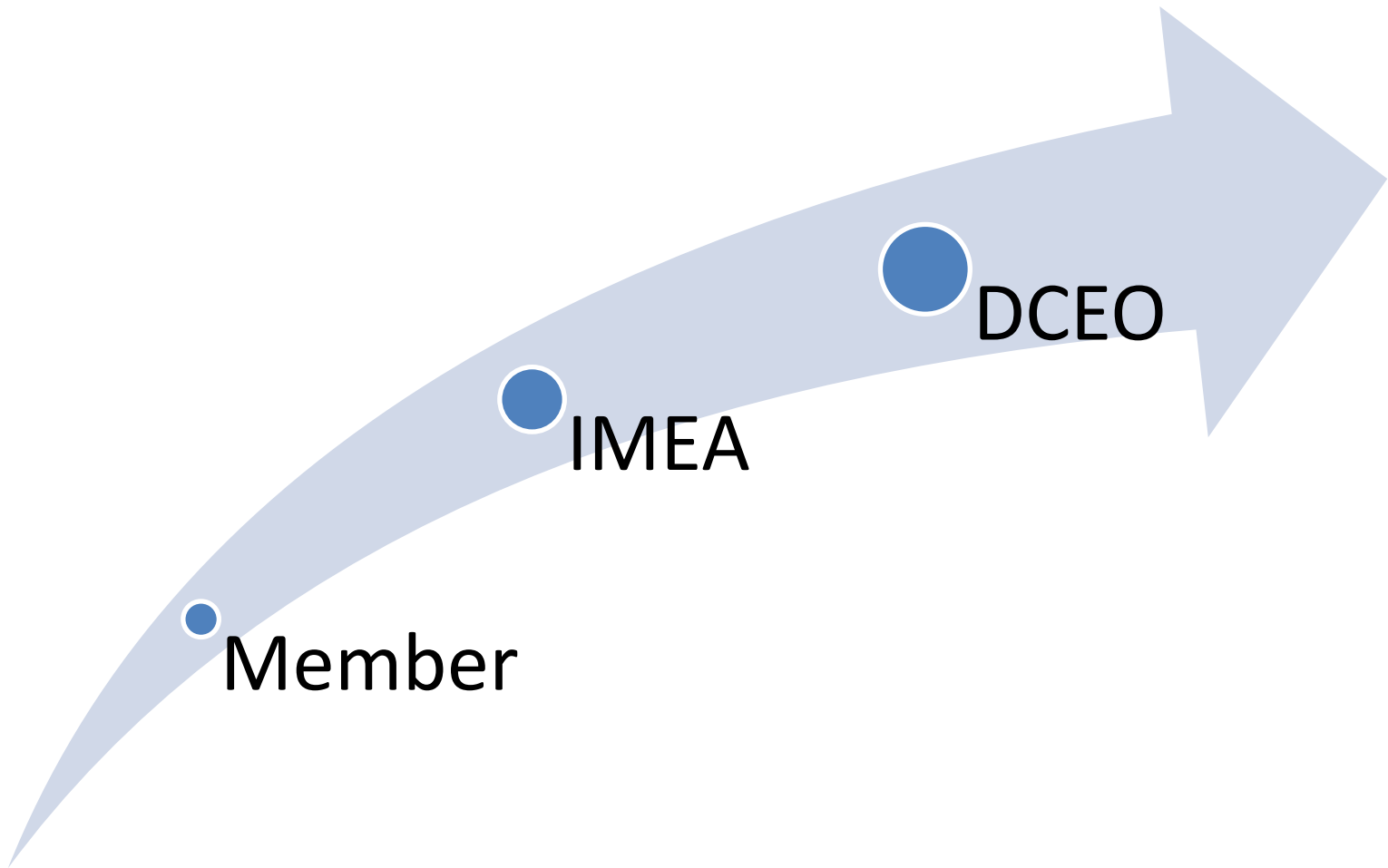
Custom Program

- Covers “non-listed” ideas such as:
 - Induction Street Lights
 - LED Street Lights
 - Smaller Air Conditioners
 - Custom Equipment

Application Process

- Go to IMEA Website (www.imea.org)
- Select “Energy Efficiency”
- Select “IMEA Electric Energy Efficiency Application Forms”
- Complete forms, print and sign
- Vendors or IMEA staff can help

Application Flow



Application Process

- Member Duties
 - Member accepts application
 - Confirms that this is a customer
 - Forwards the Project to IMEA
 - Confirmation the Member wants funding
 - Member should have access to site

Application Process

- IMEA Duties
 - IMEA reviews data for completeness
 - Coordinates with Member
 - Verifies funding is available (first project in, first funded for each member)
 - Forwards application to DCEO

DCEO Obligations

- Reviews Application for accuracy and completeness
- Confirms that project qualifies
- Monitors, evaluates, and confirms projects
- Requests payment from IMEA
- Forwards Payment to Customer
- Provides Summaries and Documentation of Results

Summary

- We want to make every effort to make this as easy as possible for our members! We will modify this program as we move forward.